

TORINO 2

PCB Thickness:1mm

CPU :INTEL MEROM
Chip Set :INTEL 965GM & ICH8-M
Remarks :w/o INTEL AMT
2 SODIMMs

Model Name : TORINO 2
PBA Name : MAIN
PCB Code : BA41-00727A / 728A
Dev. Step : MP
Revision : 1.0
T.R. Date : 2007.03.09

DRAW	CHECK	APPROVAL
-	-	-

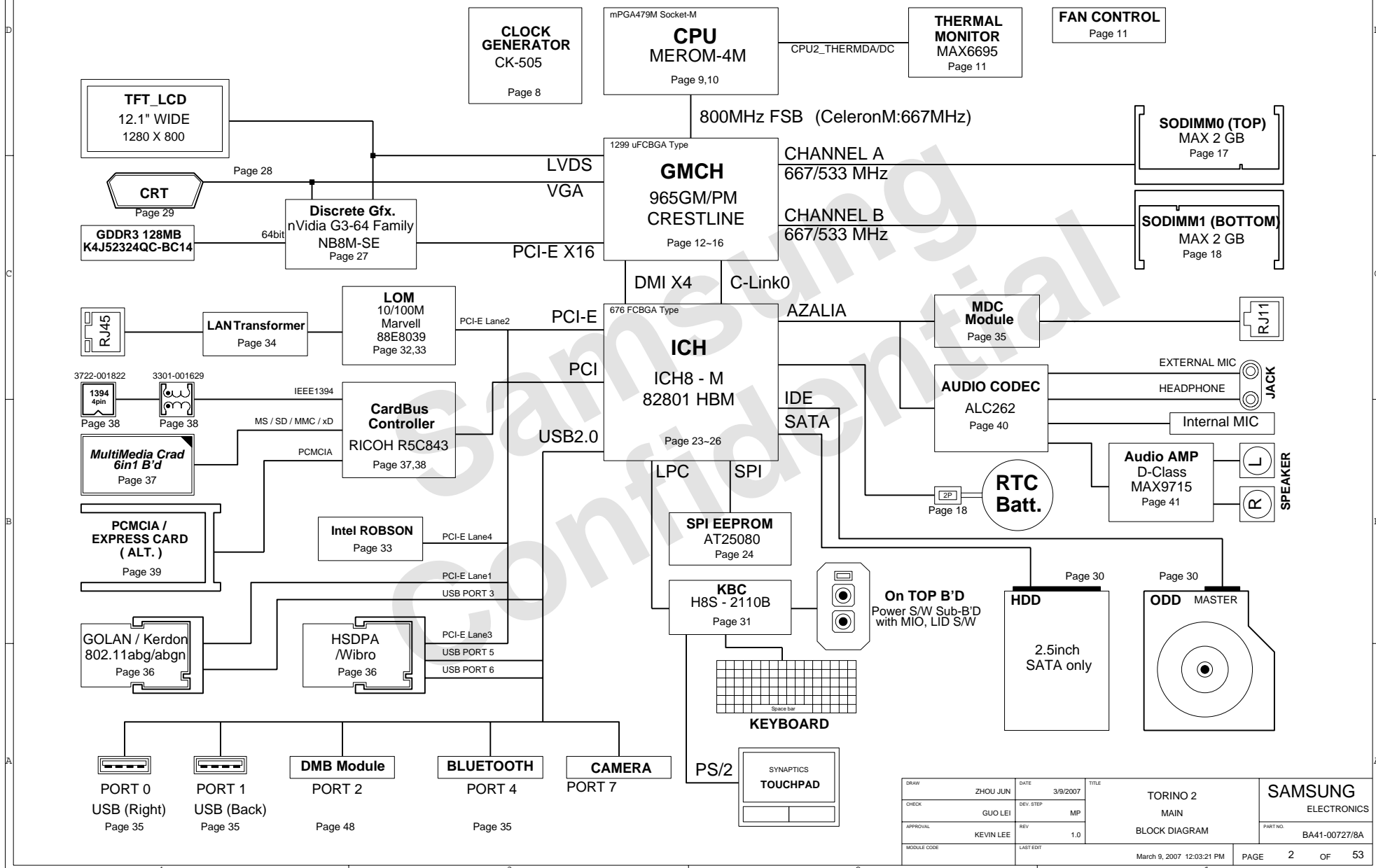
Table of Contents

Page. 1	---	COVER	
Page. 2	---	OPERATION BLOCK DIAGRAM	
Page. 3	---	POWER DIAGRAM	
Page. 4	---	POWER SEQUENCE	
Page. 5	---	POWER RAIL	
Page. 6	---	CLOCK DISTRIBUTION	
Page. 7	---	BOARD INFORMATION	
Page. 8	---	CLOCK GENERATOR (CK-505)	
Page. 9~10	---	MEROM	
Page. 11	---	THERMAL MONITOR	
Page. 12~16	---	CRESTLINE (965GM)	
Page. 17	---	DDR2 SODIMM (TOP)	
Page. 18	---	DDR2 SODIMM (BOTTOM)	
Page. 19	---	DDR2 TERMINATION	
Page. 20~23	---	DISCRETE GFX (NB8M-SE & GDDR3)	
Page. 24~27	---	ICH8-M	
Page. 28	---	LCD (LVDS) CONN.	
Page. 29	---	CRT CONN.	
Page. 30	---	HDD & ODD CONNECTOR	
Page. 31	---	MICOM	
Page. 32	---	LAN CONTROLLER (10/100M)	
Page. 33	---	ROBSON	
Page. 34	---	USB PORT, MDC CONN. & BLUETOOTH	
Page. 35	---	MINI CARD SOCKET (WLAN/HSDPA/WIBRO)	
Page. 36	---	CARDBUS CONTROLLER(1) & 4IN1	
Page. 37	---	CARDBUS CONTROLLER(2) & 1394 (4P)	
Page. 38	---	PCMCIA SOCKET	
Page. 39	---	AUDIO CODEC	
Page. 40	---	AUDIO AMP	
Page. 41	---	AUDIO JACK	
Page. 42	---	CHARGER	
Page. 43	---	P3.3V AUX & P5V_AUX	
Page. 44	---	DDR2 POWER	
Page. 45	---	CPU VRM POWER	
Page. 46	---	P1.25V & P1.05V POWER	
Page. 47	---	GFX CORE & P1.5V POWER	
Page. 48	---	SWITCHED POWER	
Page. 49	---	POWER S/W, DMB, DEBUG & KEYBOARD CONN.	
Page. 50	---	LEDS & TOUCHPAD	
Page. 51	---	MOUNT HOLE	
Page. 52	---	TEST POINTS	
Page. 53	---	REVISION HISTORY	

DIAGRAM

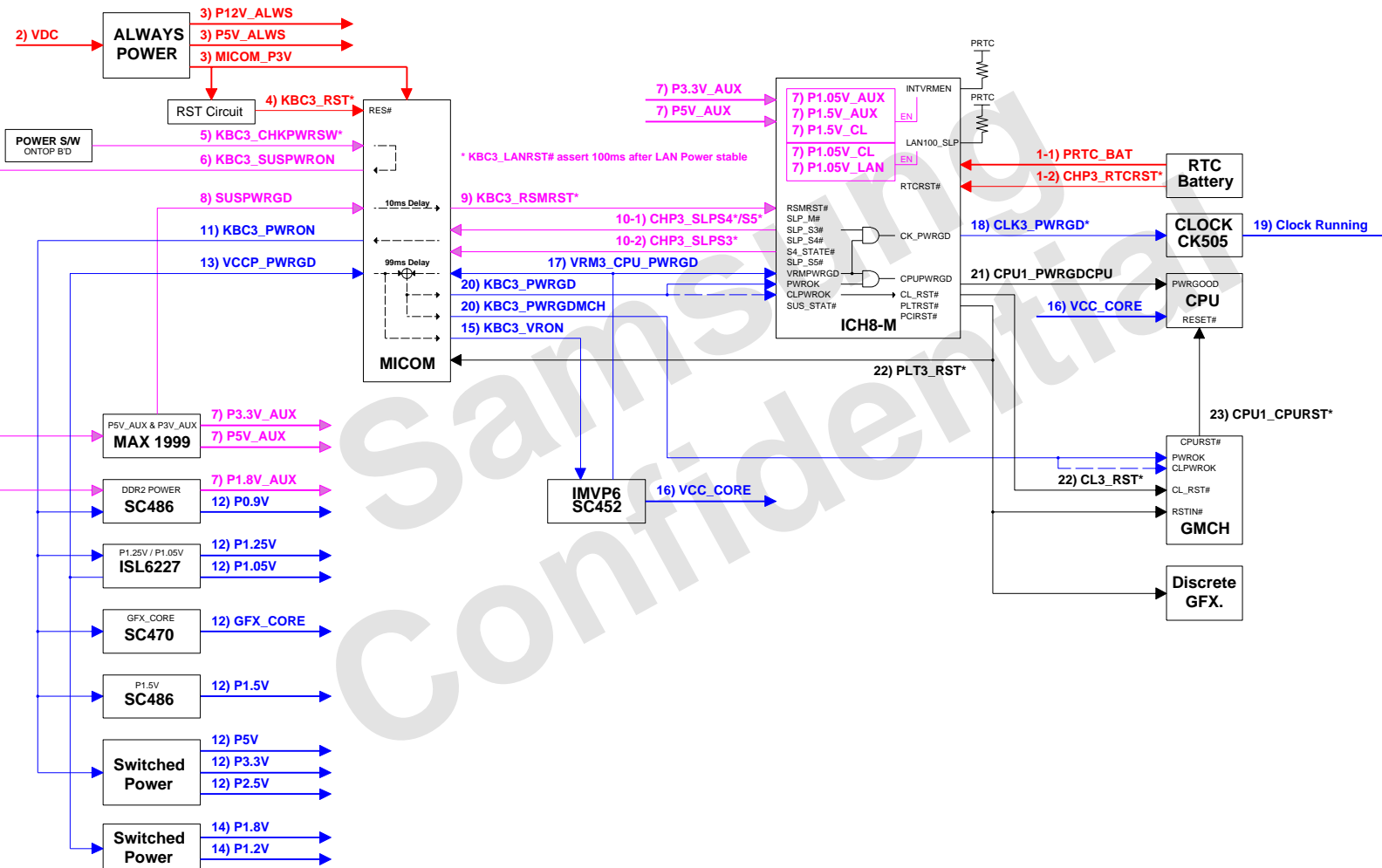
DRAW	ZHOU JUN	DATE	3/9/2007	TITLE	TORINO 2	SAMSUNG
CHECK	GUO LEI	DEV. STEP	MP		COVER	ELECTRONICS
APPROVAL	KEVIN LEE	REV	1.0		CONTENTS	PART NO. BA41-00727/8A
MODULE CODE		LAST EDIT	March 9, 2007 12:03:21 PM	PAGE	1	OF 53

OPERATION BLOCK DIAGRAM

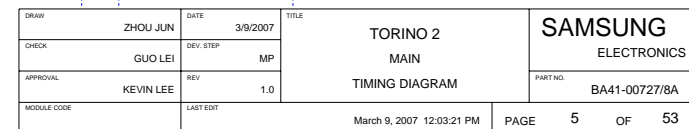


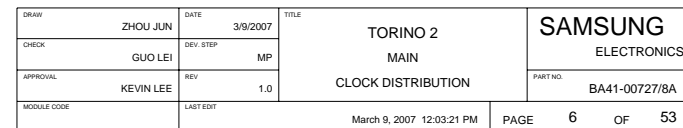
DRAW	ZHOU JUN	DATE	3/9/2007	TITLE	TORINO 2	SAMSUNG
CHECK	GUO LEI	DEV. STEP	MP	MAIN	BLOCK DIAGRAM	ELECTRONICS
APPROVAL	KEVIN LEE	REV	1.0			PART NO. BA41-00727/8A
MODULE CODE		LAST EDIT	March 9, 2007 12:03:21 PM	PAGE	2	OF 53

POWER SEQUENCE Rev. 0.1



DRAW	ZHOU JUN	DATE	3/9/2007	TITLE	TORINO 2 MAIN POWER SEQUENCE	SAMSUNG ELECTRONICS
CHECK	GUO LEI	DEV. STEP	MP			PART NO. BA41-00727/8A
APPROVAL	KEVIN LEE	REV	1.0			
MODULE CODE		LAST EDIT	March 9, 2007 12:03:21 PM	PAGE	4	OF 53





SCHEMATIC ANNOTATIONS AND BOARD INFORMATION

Devices	IDSEL#	REQ/GNT#	Interrupts
Cardbus	AD25	0	E,F,G

VDC	Primary DC system power supply (7 to 21V)
CPU_CORE	Core voltage for Processor (1.308 - 1.068V)
P1.05V	Processor System Bus(PSB) Termination (1.05V)
GFX_CORE	GMCH & ICH8 Core Voltage
P1.8V_AUX	Core voltage for NB8M-SE (1.0 ~ 1.1V)
P0.9V	1.8V power rail for DDR2 (off in S4-S5)
P1.8V	0.9V switched power rail (off in S3-S5)
P1.2V	1.2V switched power rail (off in S3-S5)
P1.5V	1.5V switched power rail (off in S3-S5)
P2.5V	2.5V switched power rail (off in S3-S5)
P3.3V	3.3V switched power rail (off in S3-S5)
P5.0V	5.0V switched power rail (off in S3-S5)
P3.3V_AUX	3.3V power rail (off in S4-S5)
P5V_AUX	5.0V power rail (off in S4-S5)
PRTC_BAT	3.0V power rail (ALWAYS ON)
P3V3_MICOM	3.3V always on power rail for MICOM
P5V0_ALW	5V power rail (Always On)
P12.0V_ALW	12V power rail (Always On)

Devices	Address	Hex	Bus
ICH8	Master	-	SMBUS Master
SODIMM0	1010 000x	A0h	-
SODIMM1	1010 010x	A4h	-
CLK-505 (Clock Generator)	1101 001x	D2h	Clock, Unused Clock Output Disable
MICOM	Master	-	SMBUS Master
BATTERY	0001 011x	16h	Thermal Sensor
EMC2102 (Thermal Sensor)	0111 101x	7Ah	Thermal Sensor

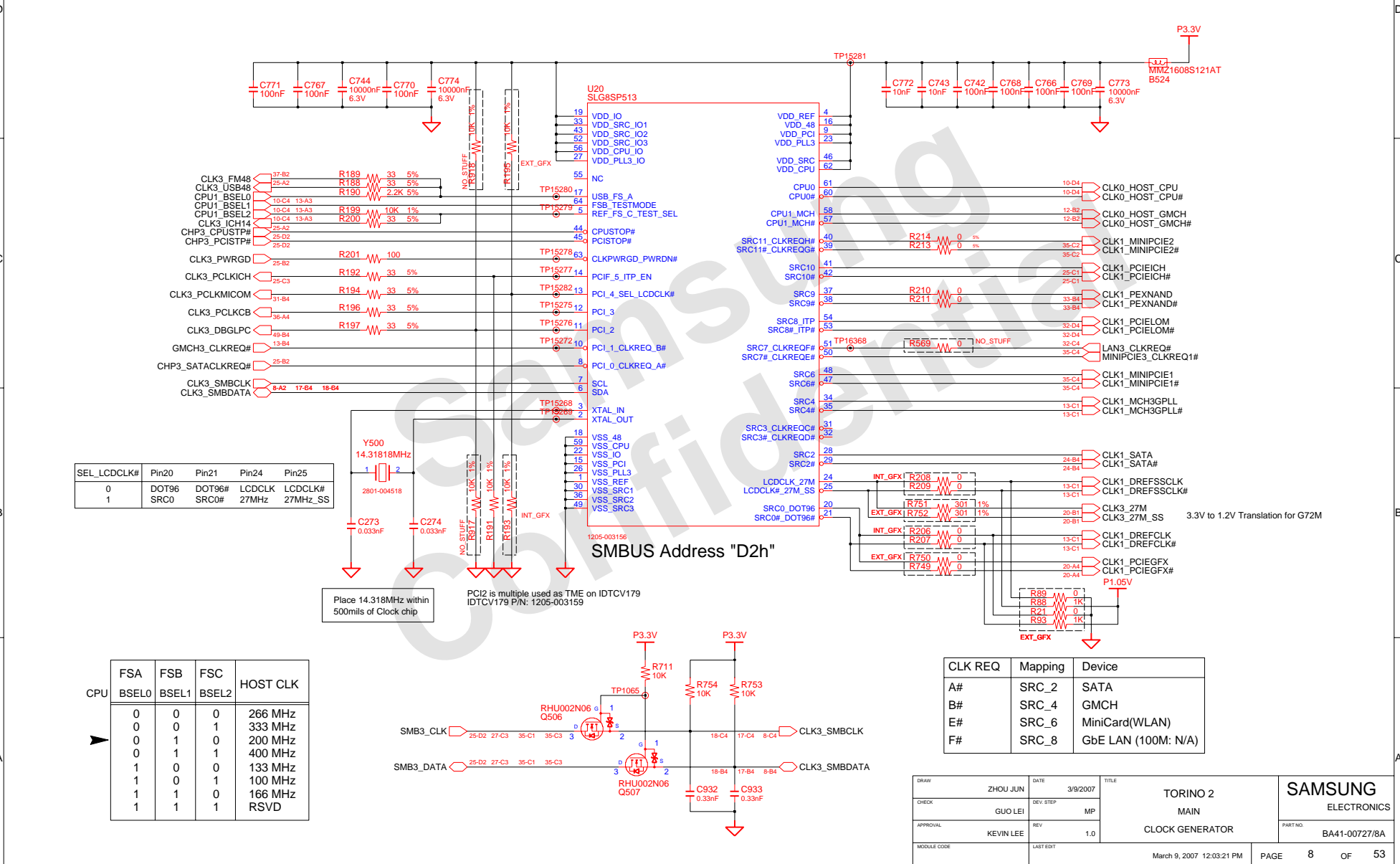
PORT NUMBER	ASSIGNED TO
0	SYSTEM PORT A
1	SYSTEM PORT B
2	DMB CARD
3	MINIPCI-E
4	BLUETOOTH
5	WIBRO SIM CARD
6	HSDPA
7	CAMERA

CHP3_SLPS1*	S1, Powered-On/Suspend(POS) : In this state, all clocks(except the 32.768kHz clock) are stopped. The system context is maintained in system DRAM. Power is maintained to PCI, the CPU, memory controller, memory, and all other critical subsystems. Note that this state does not preclude power being removed from non-essential devices, such as disk drives. During this state, CPU can be selected for either Deep Sleep or Deeper Sleep.
CHP3_SLPS3*	S3, Suspend-To-RAM(STR) : The system context is maintained in system DRAM, but power is shut off to non-critical circuits. In Deeper Sleep, CPU voltage reduced in this state to reduce the leakage power. Memory is retained, and refreshes continue. All clocks stop except RTC clock.
CHP3_SLPA4*	S4, Suspend-To-Disk(STD) : The Context of the system is maintained on the disk. All power is then shut off to the system except for the logic required to resume.
CHP3_SLPS5*	S5, Soft Off(SOFF) : System context is not maintained. All power is shut off except for the logic required to restart. A full boot is required when waking.

TYPE	FREQUENCY	DEVICE	USAGE
Crystal	32.768KHz	ICH8-M	Real Time Clock
Crystal	10MHz	MICOM	H8S/2110BV
Crystal	14.318MHz	CLOCK-Generator	CK-505
Crystal	24.576MHz	Cardbus Controller	1394
	25MHz	LAN	LAN

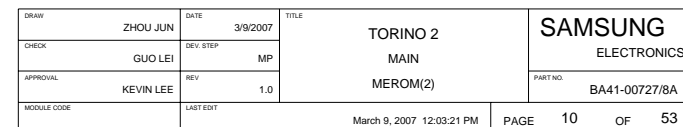
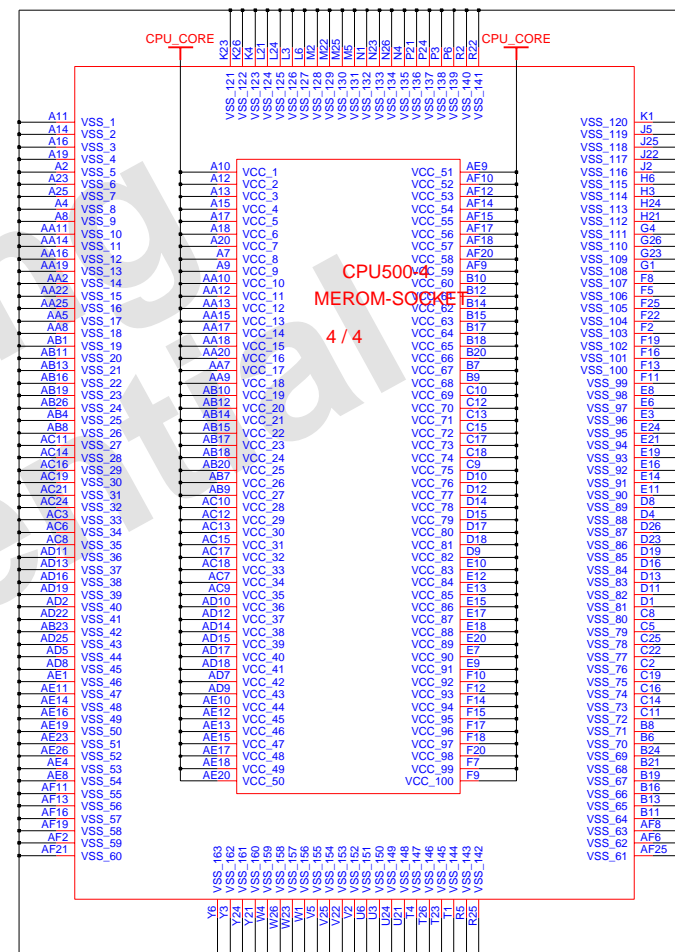
Active Mode							Active/Deeper Sleep Dual Mode Region							Deeper Sleep/Extended Deeper Sleep Dual Mode Region																											
VID(6:0)							Voltage							VID(6:0)							Voltage							VID(6:0)							Voltage						
0	0	0	0	0	0	0	1.5000 V	0	1	0	1	0	0	0	1.0000 V	1	0	1	0	0	0	1	0.4875 V	0	0	0	0	0	0	0.4875 V											
0	0	0	0	0	0	1	1.4875 V	0	1	0	1	0	1	1	0.9875 V	1	0	1	0	1	0	1	0.4625 V	0	0	0	0	0	0	0.4625 V											
0	0	0	0	0	1	0	1.4750 V	0	1	0	1	0	1	0	0.9750 V	1	0	1	0	1	0	1	0.4625 V	0	0	0	0	0	0	0.4625 V											
0	0	0	0	0	1	1	1.4625 V	0	1	0	1	0	1	1	0.9625 V	1	0	1	0	1	0	1	0.4500 V	0	0	0	0	0	0	0.4500 V											
0	0	0	0	1	0	0	1.4500 V	0	1	0	1	1	1	0	0.9500 V	1	0	1	0	1	0	1	0.4375 V	0	0	0	0	0	0	0.4375 V											
0	0	0	1	0	0	0	1.4375 V	0	1	0	1	1	0	1	0.9375 V	1	0	1	0	1	0	1	0.4250 V	0	0	0	0	0	0	0.4250 V											
0	0	0	1	0	1	0	1.4250 V	0	1	0	1	1	0	0	0.9250 V	1	0	1	0	1	0	1	0.4125 V	0	0	0	0	0	0	0.4125 V											
0	0	0	0	1	1	1	1.4125 V	0	1	0	1	1	1	1	0.9125 V	1	0	1	0	1	0	0	0.4000 V	0	0	0	0	0	0	0.4000 V											
0	0	0	1	0	0	0	1.4000 V	0	1	1	0	0	0	0	0.9000 V	1	0	1	0	1	0	0	0.3875 V	0	0	0	0	0	0	0.3875 V											
0	0	0	1	0	1	0	1.3875 V	0	1	1	0	0	0	0	0.8875 V	1	0	1	0	1	0	0	0.3750 V	0	0	0	0	0	0	0.3750 V											
0	0	1	0	0	0	0	1.3750 V	0	1	1	0	0	0	0	0.8750 V	1	0	1	0	1	0	0	0.3625 V	0	0	0	0	0	0	0.3625 V											
0	0	1	0	0	1	1	1.3625 V	0	1	1	0	0	1	1	0.8625 V	1	0	1	0	1	0	0	0.3500 V	0	0	0	0	0	0	0.3500 V											
0	0	0	1	1	0	0	1.3500 V	0	1	1	0	1	0	0	0.8500 V	1	0	1	0	1	0	1	0.3375 V	0	0	0	0	0	0	0.3375 V											
0	0	0	1	1	0	1	1.3375 V	0	1	1	0	1	0	1	0.8375 V	1	0	1	0	1	1	1	0.3250 V	0	0	0	0	0	0	0.3250 V											
0	0	0	0	1	1	0	1.3250 V	0	1	1	0	1	0	1	0.8250 V	1	0	1	0	1	1	1	0.3125 V	0	0	0	0	0	0	0.3125 V											
0	0	0	1	1	1	0	1.3125 V	0	1	1	0	1	0	1	0.8125 V	1	1	0	0	0	0	0	0.3000 V	0	0	0	0	0	0	0.3000 V											
0	0	1	0	0	0	0	1.3000 V	0	1	1	1	0	0	0	0.8000 V	1	1	0	0	0	0	0	0.2875 V	0	0	0	0	0	0	0.2875 V											
0	0	1	0	0	0	1	1.2875 V	0	1	1	1	0	0	1	0.7875 V	1	1	0	0	0	0	1	0.2750 V	0	0	0	0	0	0	0.2750 V											
0	0	1	0	1	0	0	1.2750 V	0	1	1</																															

DRAWN	ZHOU JUN	DATE	3/9/2007	TORINO 2 MAIN BOARD INFORMATION	SAMSUNG ELECTRONICS		
CHECK	GUO LEI	DEV. STEP	MP		PART NO. BA41-00727/8A		
APPROVAL	KEVIN LEE	REV	1.0				
MODULE CODE		LAST EDIT				March 9, 2007 12:03:21 PM	PAGE

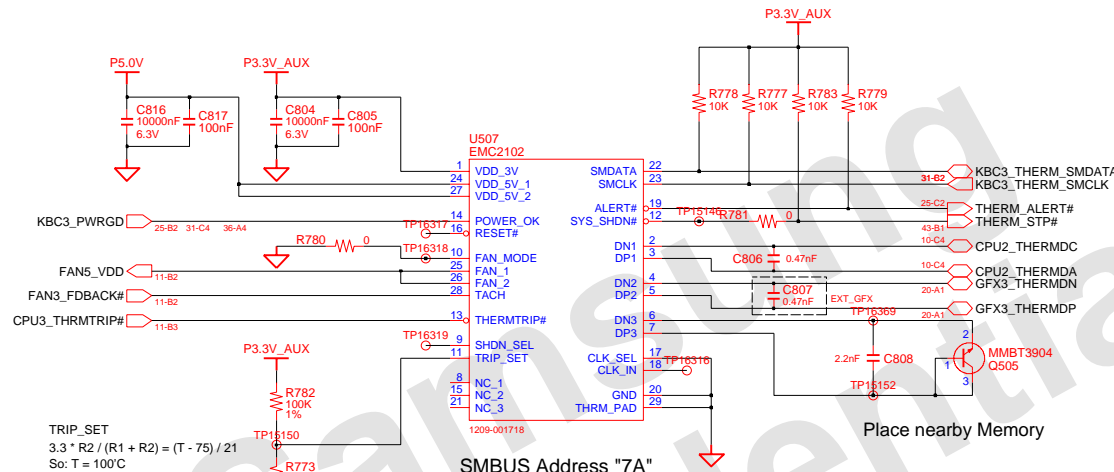


Downloaded from <http://ajph.org/> on November 10, 2015

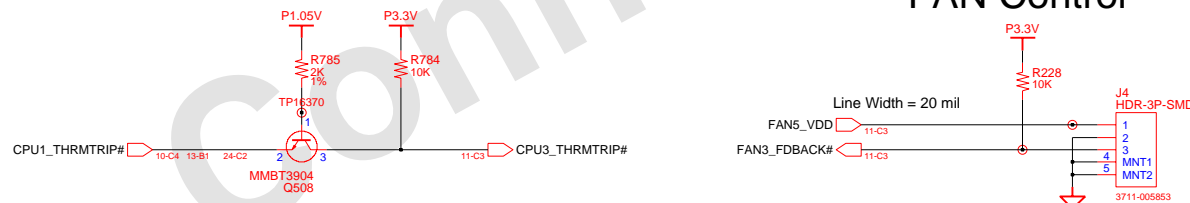




Thermal Monitor

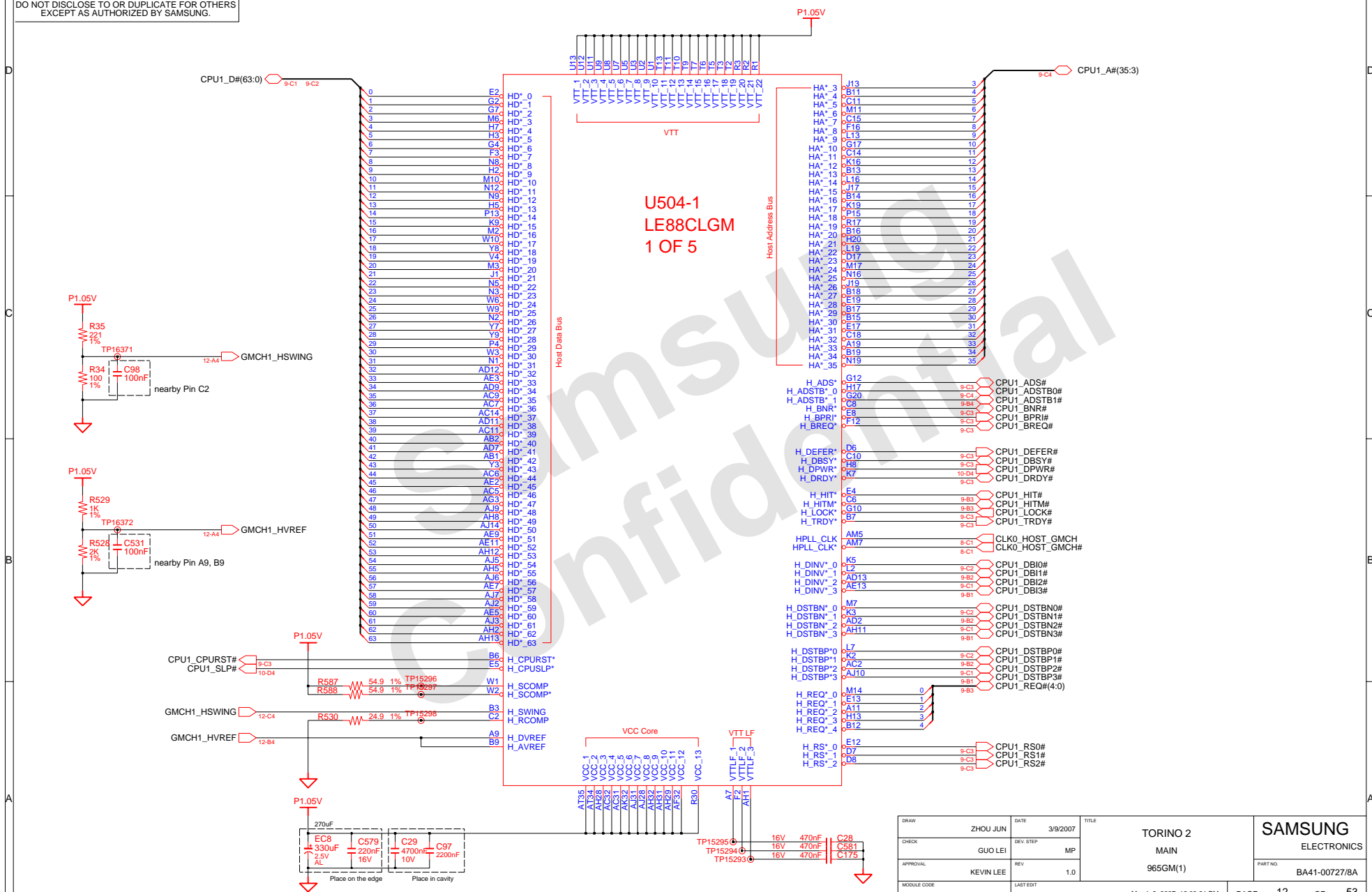


FAN Control



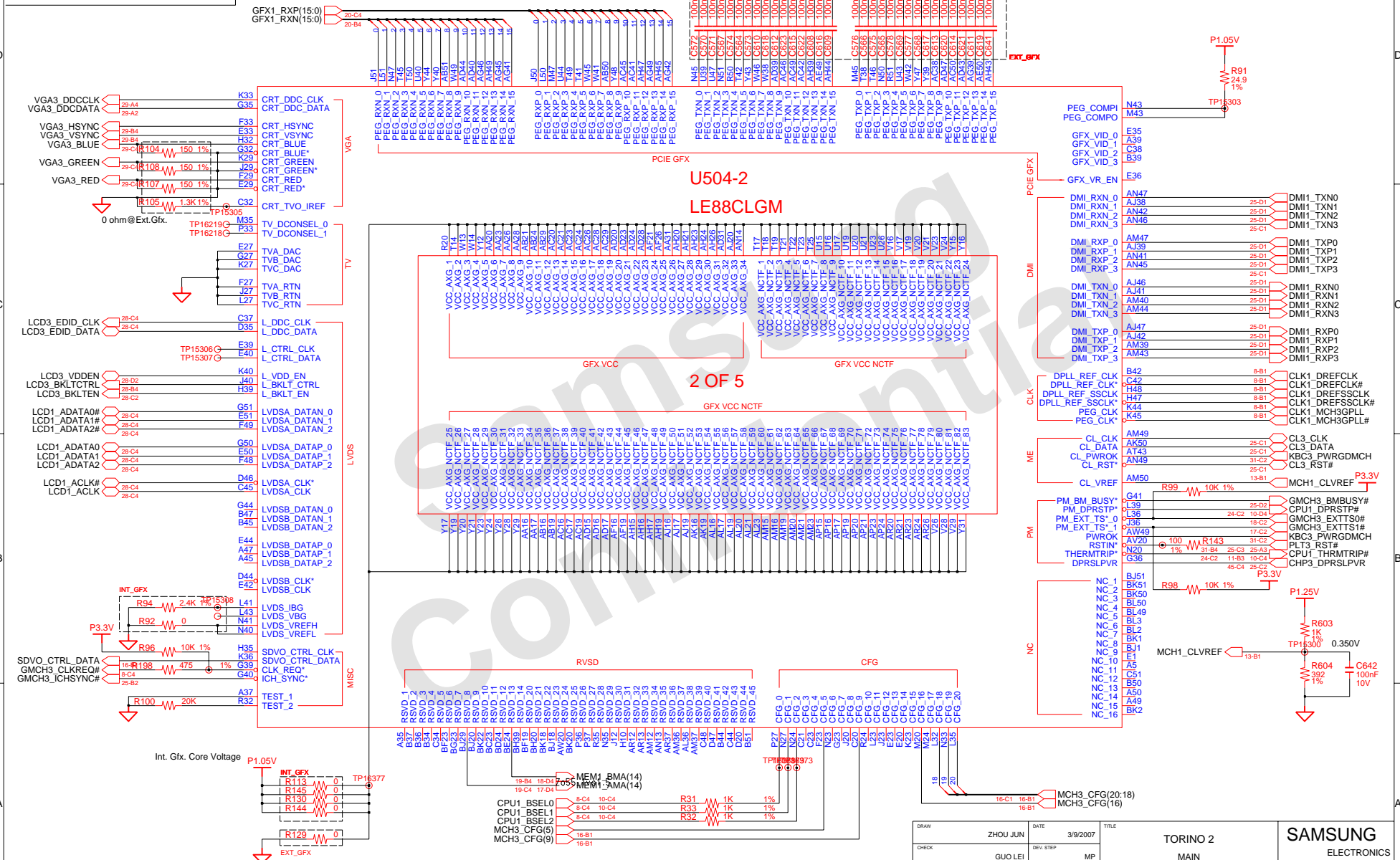
DRAW	ZHOU JUN	DATE	3/9/2007	TITLE	TORINO 2	SAMSUNG
CHECK	GUO LEI	DEV. STEP	MP	MAIN	MAIN	ELECTRONICS
APPROVAL	KEVIN LEE	REV	1.0	THERMAL MONITOR	PART NO.	BA41-00727/8A
MODULE CODE		LAST EDIT			PAGE	11 OF 53

SAMSUNG PROPRIETARY
THIS DOCUMENT CONTAINS CONFIDENTIAL
PROPRIETARY INFORMATION THAT IS
SAMSUNG ELECTRONICS CO'S PROPERTY.
DO NOT DISCLOSE TO OR DUPLICATE FOR OTHERS
EXCEPT AS AUTHORIZED BY SAMSUNG.



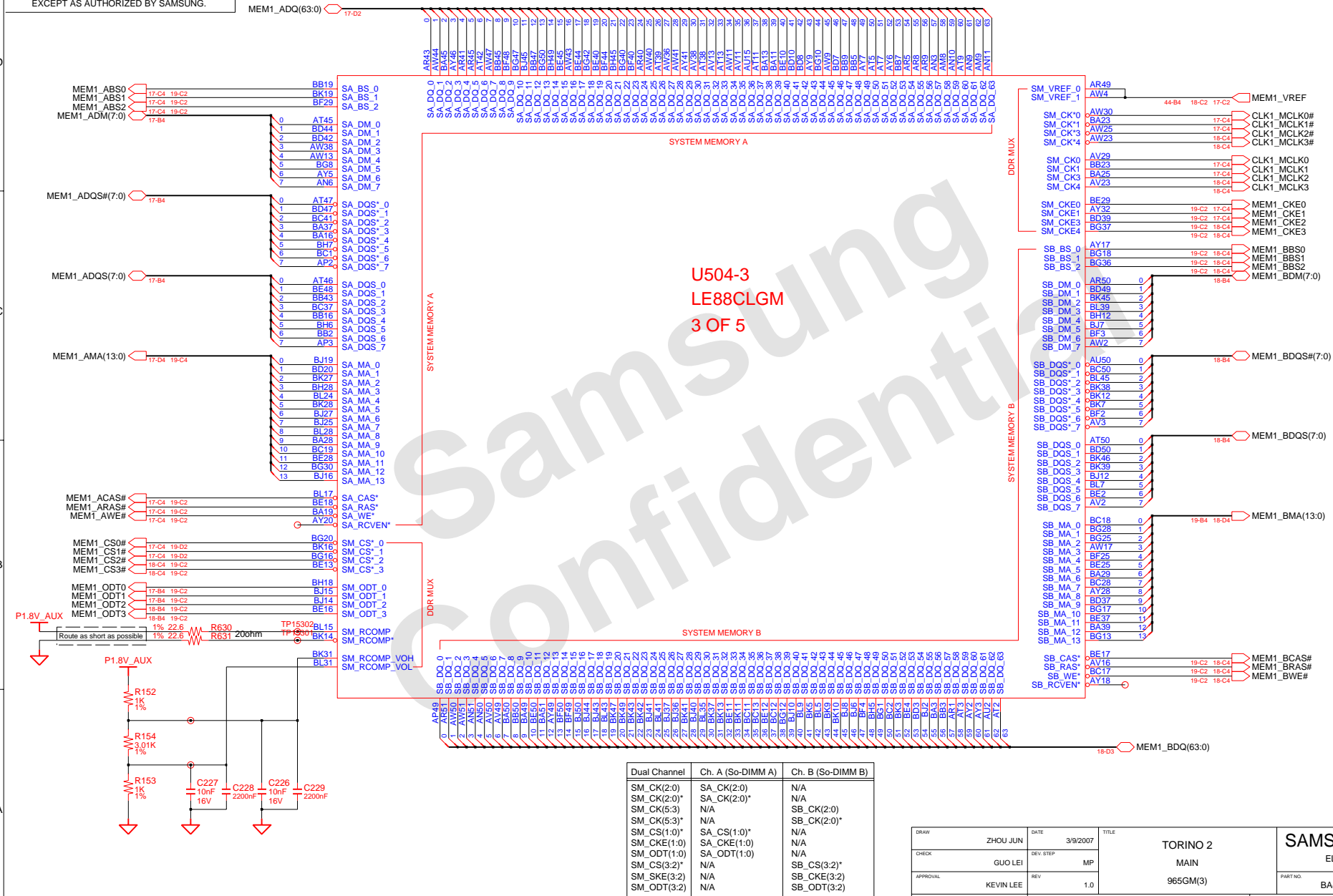
DRAWN	ZHOU JUN	DATE	3/9/2007	TITLE	TORINO 2 MAIN 965GM(1)	SAMSUNG ELECTRONICS			
CHECK	GUO LEI	REV. STEP	MP						
APPROVAL	KEVIN LEE	REV	1.0						
MODULE CODE		LAST EDIT				March 9, 2007 12:03:21 PM	PAGE	12	OF
						PART NO.	BA41-00727/8A		

SAMSUNG PROPRIETARY
THIS DOCUMENT CONTAINS CONFIDENTIAL
PROPRIETARY INFORMATION THAT IS
SAMSUNG ELECTRONICS CO'S PROPERTY.
DO NOT DISCLOSE TO OR DUPLICATE FOR OTHERS
EXCEPT AS AUTHORIZED BY SAMSUNG.

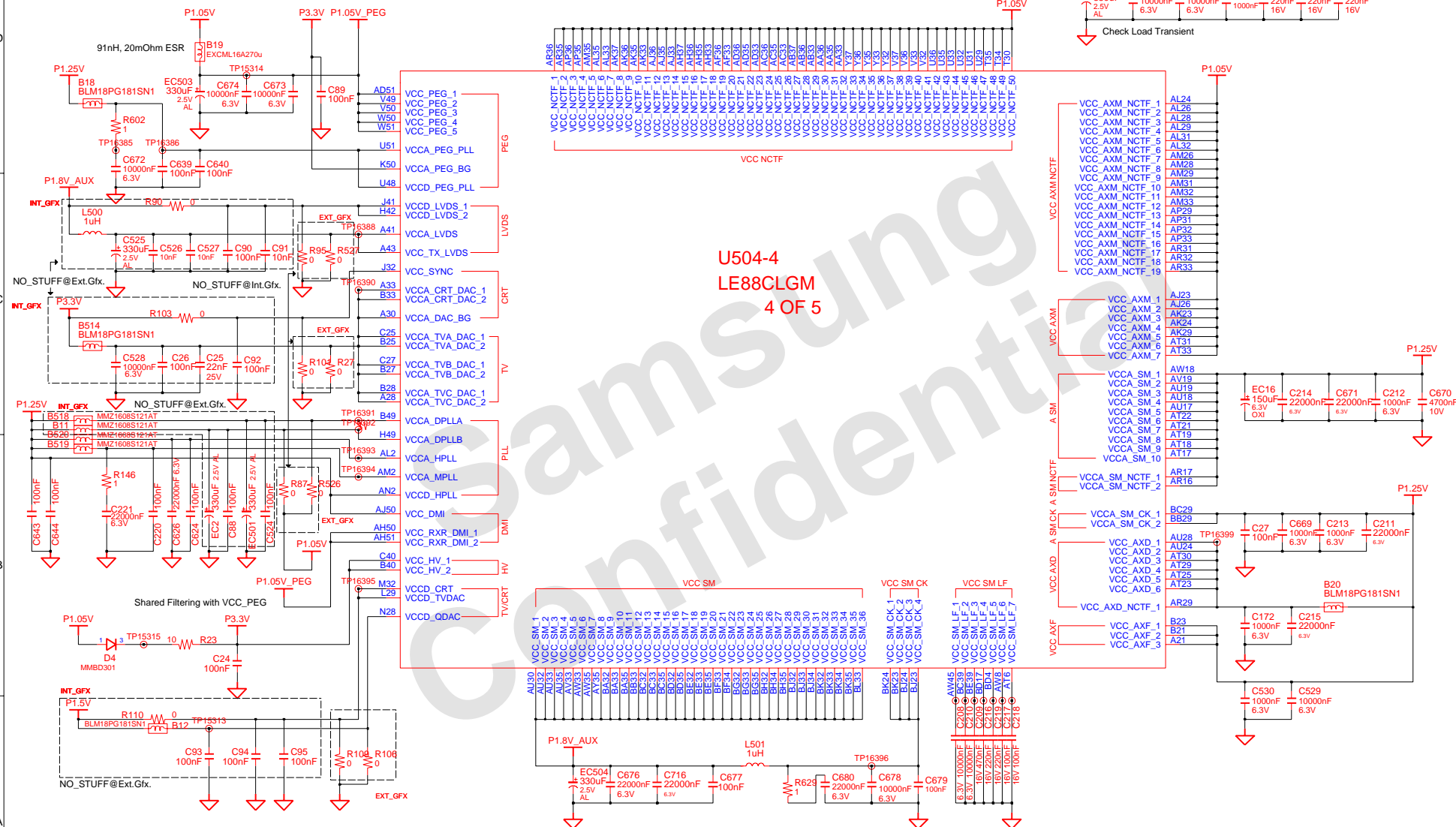


DRAWN	ZHOU JUN	DATE	3/9/2007	TITLE	TORINO 2 MAIN 965GM(2)	SAMSUNG		
CHECK	GUO LEI	DEV. STEP	MP			ELECTRONICS		
APPROVAL	KEVIN LEE	REV	1.0			PART NO.	BA41-00727/8A	
MODULE CODE	LAST EDIT		March 9, 2007 12:03:21 PM			PAGE	13	OF

SAMSUNG PROPRIETARY
THIS DOCUMENT CONTAINS CONFIDENTIAL
PROPRIETARY INFORMATION THAT IS
SAMSUNG ELECTRONICS CO.'S PROPERTY.
DO NOT DISCLOSE TO OR DUPLICATE FOR OTHERS
EXCEPT AS AUTHORIZED BY SAMSUNG.

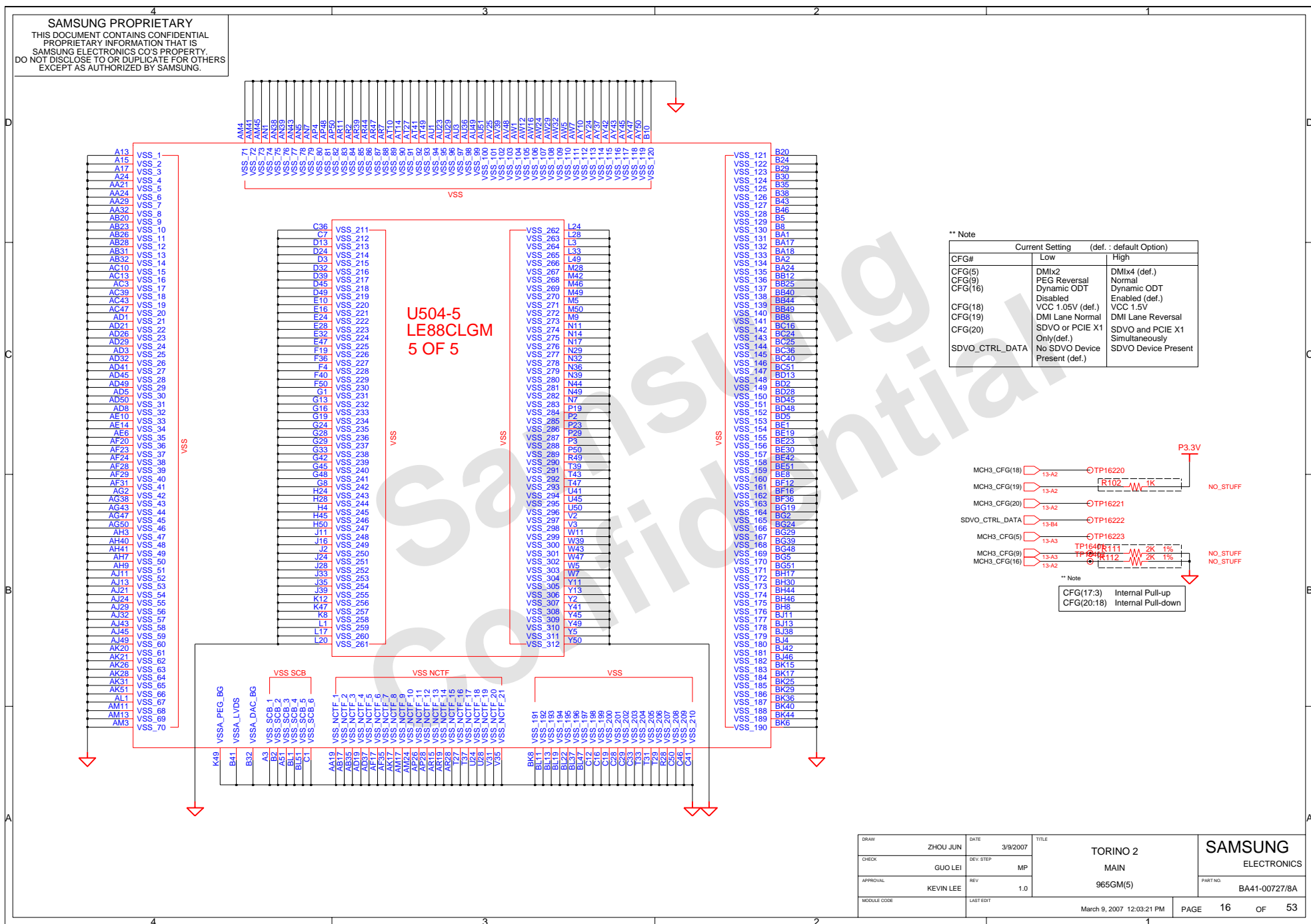


SAMSUNG PROPRIETARY
THIS DOCUMENT CONTAINS CONFIDENTIAL
PROPRIETARY INFORMATION THAT IS
SAMSUNG ELECTRONICS CO'S PROPERTY.
DO NOT DISCLOSE TO OR DUPLICATE FOR OTHERS
EXCEPT AS AUTHORIZED BY SAMSUNG.



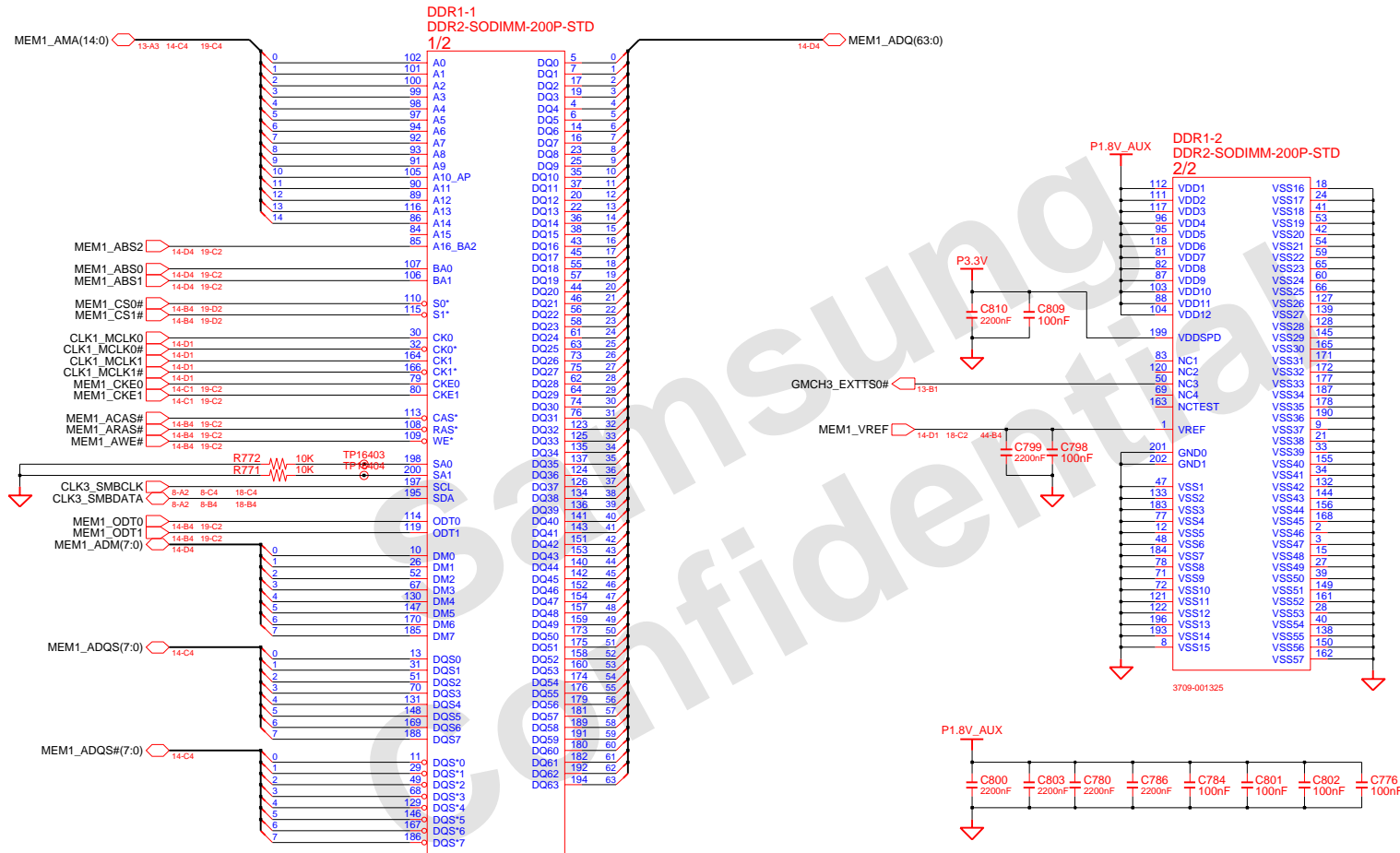
DRAW	ZHOU JUN	DATE	3/9/2007	TITLE TORINO 2 MAIN 965GM(4)	PART NO. BA41-00727/8A	SAMSUNG ELECTRONICS
CHECK	GUO LEI	DEV. STEP	MP			
APPROVAL	KEVIN LEE	REV	1.0			
MODULE CODE	LAST EDIT					
				March 9, 2007 12:03:21 PM	PAGE	15 OF 53

SAMSUNG PROPRIETARY
THIS DOCUMENT CONTAINS CONFIDENTIAL
PROPRIETARY INFORMATION THAT IS
SAMSUNG ELECTRONICS CO'S PROPERTY.
DO NOT DISCLOSE TO OR DUPLICATE FOR OTHERS
EXCEPT AS AUTHORIZED BY SAMSUNG.



SAMSUNG PROPRIETARY
THIS DOCUMENT CONTAINS CONFIDENTIAL
PROPRIETARY INFORMATION THAT IS
SAMSUNG ELECTRONICS CO.'S PROPERTY.
DO NOT DISCLOSE TO OR DUPLICATE FOR OTHERS
EXCEPT AS AUTHORIZED BY SAMSUNG.

SODIMM0 (TOP)



DRAW	ZHOU JUN	DATE	3/9/2007	TITLE	TORINO 2	SAMSUNG
CHECK	GUO LEI	DEV. STEP	MP	MAIN	MAIN	ELECTRONICS
APPROVAL	KEVIN LEE	REV	1.0	DDR2 SODIMM (TOP)	PART NO.	BA41-00727/8A
MODULE CODE	LAST EDIT	March 9, 2007 12:03:21 PM	PAGE	17	OF	53

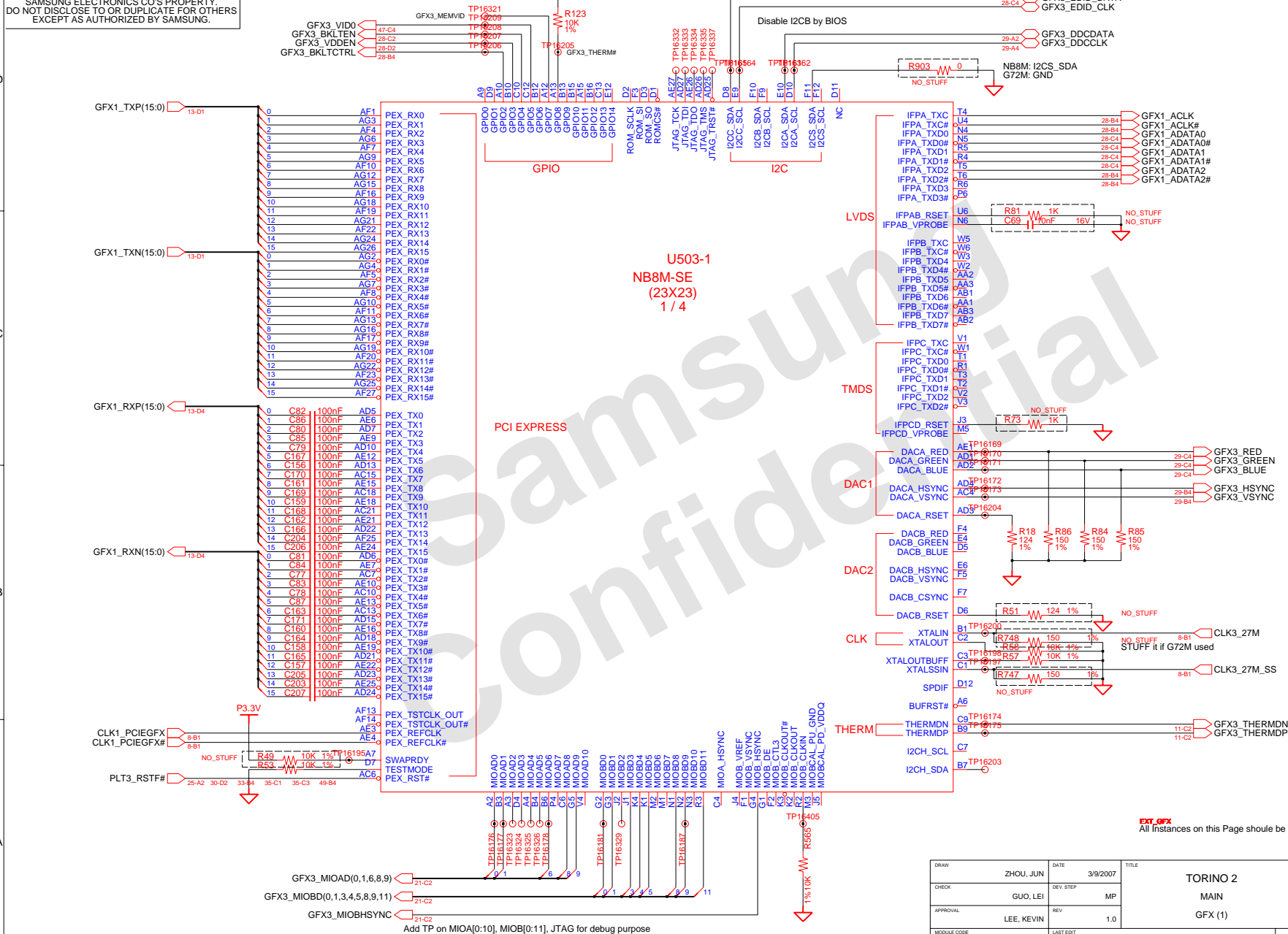
COM-22C-015(1996.6.5) REV. 3

SAMSUNG PROPRIETARY
THIS DOCUMENT CONTAINS CONFIDENTIAL
PROPRIETARY INFORMATION THAT IS
SAMSUNG ELECTRONICS CO'S PROPERTY.
DO NOT DISCLOSE TO OR DUPLICATE FOR OTHERS
EXCEPT AS AUTHORIZED BY SAMSUNG.



DRAW	ZHOU JUN	DATE	3/9/2007	TITLE	TORINO 2	SAMSUNG
CHECK	GUO LEI	DEV. STEP	MP	MAIN	MAIN	ELECTRONICS
APPROVAL	KEVIN LEE	REV	1.0	DDR2 TERMINATION	PART NO.	BA41-00727/8A
MODULE CODE		LAST EDIT	March 9, 2007 12:03:21 PM	PAGE	19	OF 53

SAMSUNG PROPRIETARY
THIS DOCUMENT CONTAINS CONFIDENTIAL
PROPRIETARY INFORMATION THAT IS
SAMSUNG ELECTRONICS CO'S PROPERTY.
DO NOT DISCLOSE TO OR DUPLICATE FOR OTHERS
EXCEPT AS AUTHORIZED BY SAMSUNG.



EXT_GFX
All instances on this Page should be NO_STUFF @ Int. Gfx.

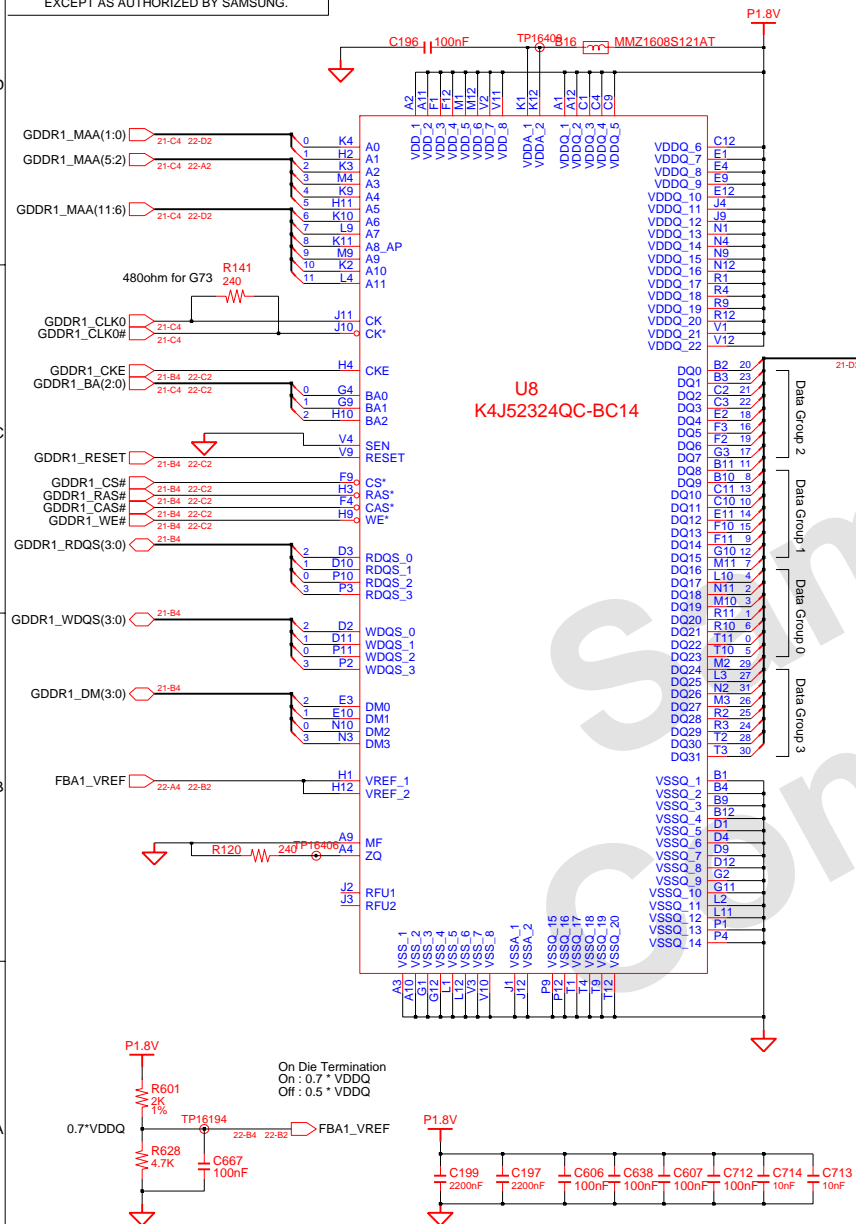
DRAW	ZHOU, JUN	DATE	3/9/2007	TITLE	TORINO 2	SAMSUNG
CHECK	GUO, LEI	DEV. STEP	MP	MAIN	MAIN	ELECTRONICS
APPROVAL	LEE, KEVIN	REV	1.0	GFX (1)	PART NO.	BA41-00727/8A
MODULE CODE		LAST EDIT	March 9, 2007 12:03:21 PM	PAGE	20	OF 53



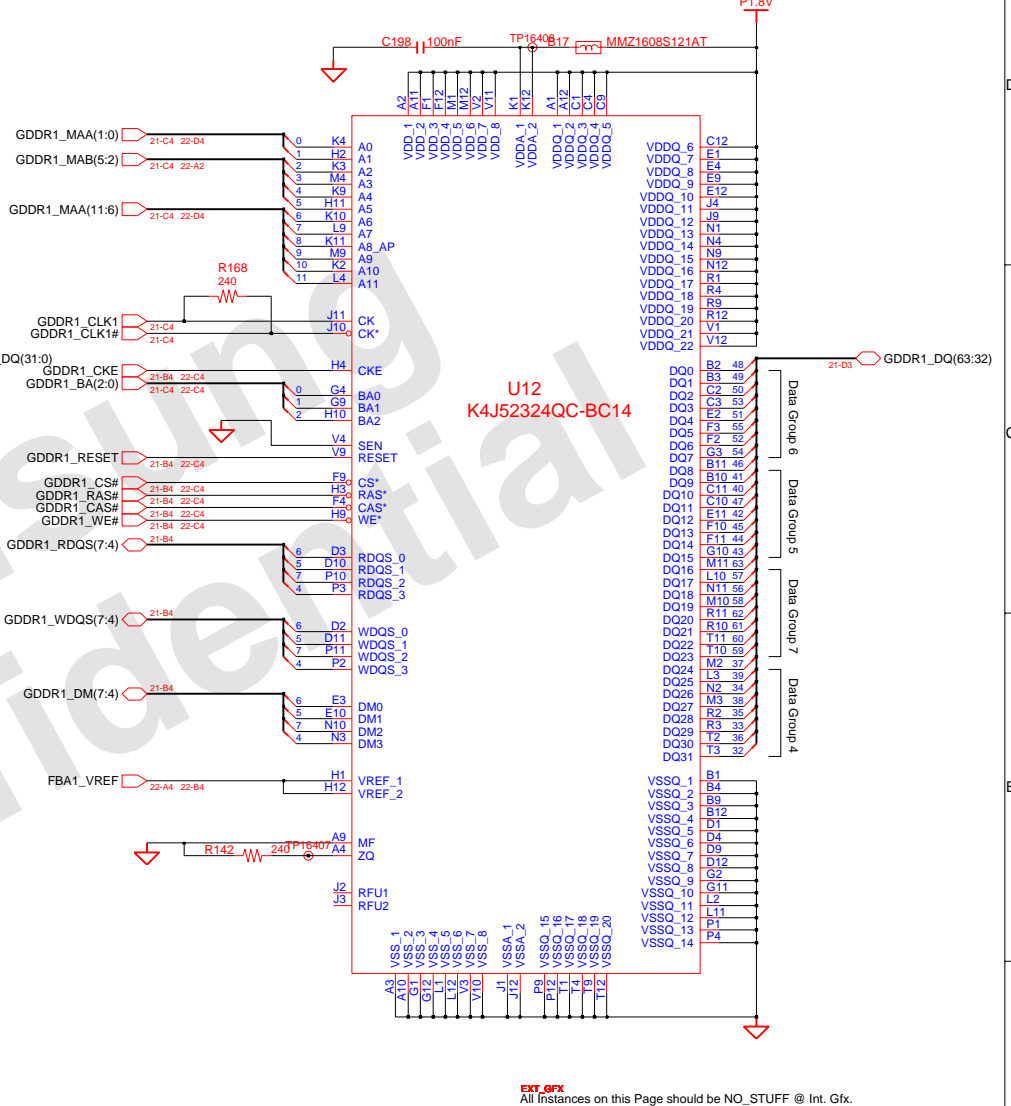
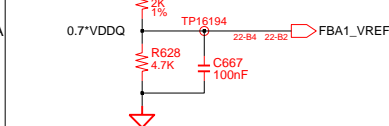
EXT_GFX
All Instances on this Page should be NO_STUFF @ Int. Gfx.

D:/users/mentor/Torino2/SR/T2 SR_0309

SAMSUNG PROPRIETARY
THIS DOCUMENT CONTAINS CONFIDENTIAL
PROPRIETARY INFORMATION THAT IS
SAMSUNG ELECTRONICS CO.'S PROPERTY.
DO NOT DISCLOSE TO OR DUPLICATE FOR OTHERS
EXCEPT AS AUTHORIZED BY SAMSUNG.



On Die Termination
On : 0.7 * VDDQ
Off : 0.5 * VDDQ



EXT. GFX
All instances on this Page should be NO_STUFF @ Int. Gfx.

DRAW	ZHOU, JUN	DATE	3/9/2007	TITLE	TORINO 2	SAMSUNG ELECTRONICS
CHECK	GUO, LEI	DEV. STEP	MP	MAIN	MAIN	
APPROVAL	LEE, KEVIN	REV	1.0	GFX (3)	GFX (3)	
MODULE CODE		LAST EDIT				
March 9, 2007 12:03:21 PM						PAGE 22 OF 53

SAMSUNG PROPRIETARY
THIS DOCUMENT CONTAINS CONFIDENTIAL
PROPRIETARY INFORMATION THAT IS
SAMSUNG ELECTRONICS CO.'S PROPERTY.
DO NOT DISCLOSE TO OR DUPLICATE FOR OTHERS
EXCEPT AS AUTHORIZED BY SAMSUNG.

U503-3 NB8M-SE (23X23)

U503-4 NB8M-SE (23X23)

G72M: 2.5V NB8M: 1.8V

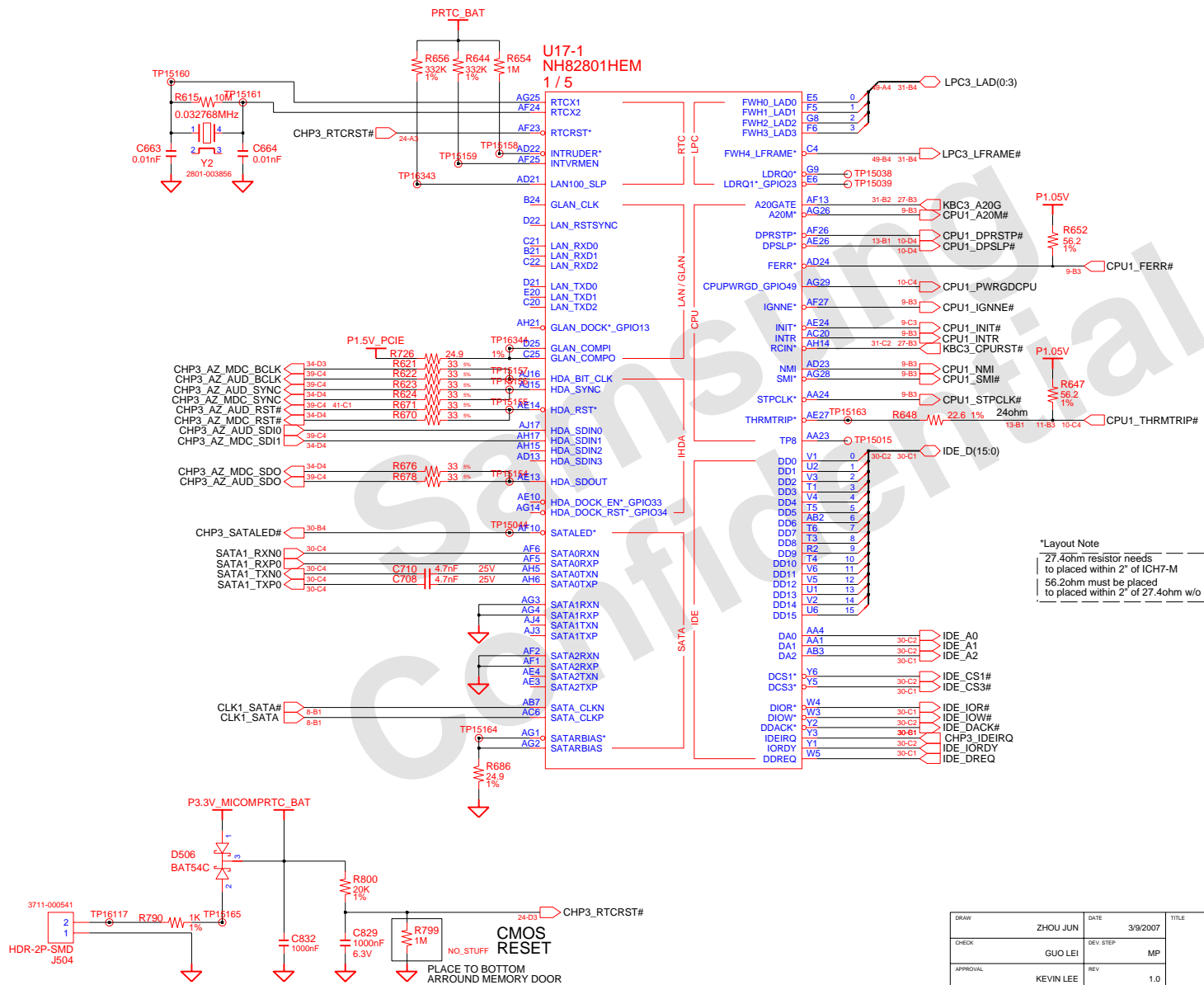
G72M: NV_PLLAVDD NB8M: VDD

NB8M: H_PLLVDD G72M: NC

EXT_GFX
All instances on this page should be NO_STUFF @ Int. Gfx.

DRAW	ZHOU, JUN	DATE	3/9/2007	TITLE	TORINO 2
CHECK <td>GUO, LEI<td>DEV STEP<td>MP<td>MAIN<td>GFX (4)</td></td></td></td></td>	GUO, LEI <td>DEV STEP<td>MP<td>MAIN<td>GFX (4)</td></td></td></td>	DEV STEP <td>MP<td>MAIN<td>GFX (4)</td></td></td>	MP <td>MAIN<td>GFX (4)</td></td>	MAIN <td>GFX (4)</td>	GFX (4)
APPROVAL <td>LEE, KEVIN<td>REV<td>1.0<td></td><td></td></td></td></td>	LEE, KEVIN <td>REV<td>1.0<td></td><td></td></td></td>	REV <td>1.0<td></td><td></td></td>	1.0 <td></td> <td></td>		
MODULE CODE <td><td>LAST EDIT<td></td><td></td><td></td></td></td>	<td>LAST EDIT<td></td><td></td><td></td></td>	LAST EDIT <td></td> <td></td> <td></td>			

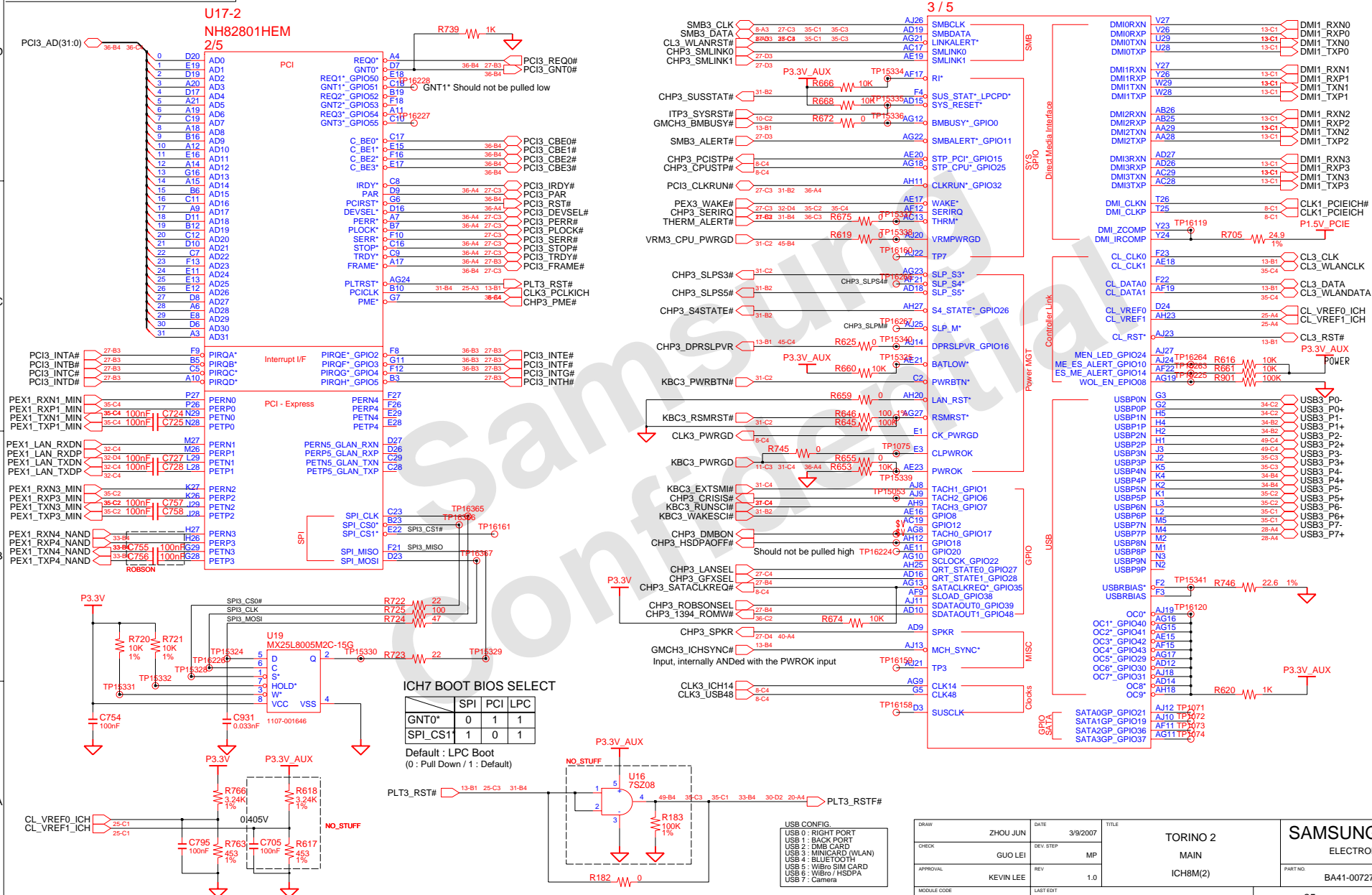
March 9, 2007 12:03:21 PM PAGE 23 OF 53



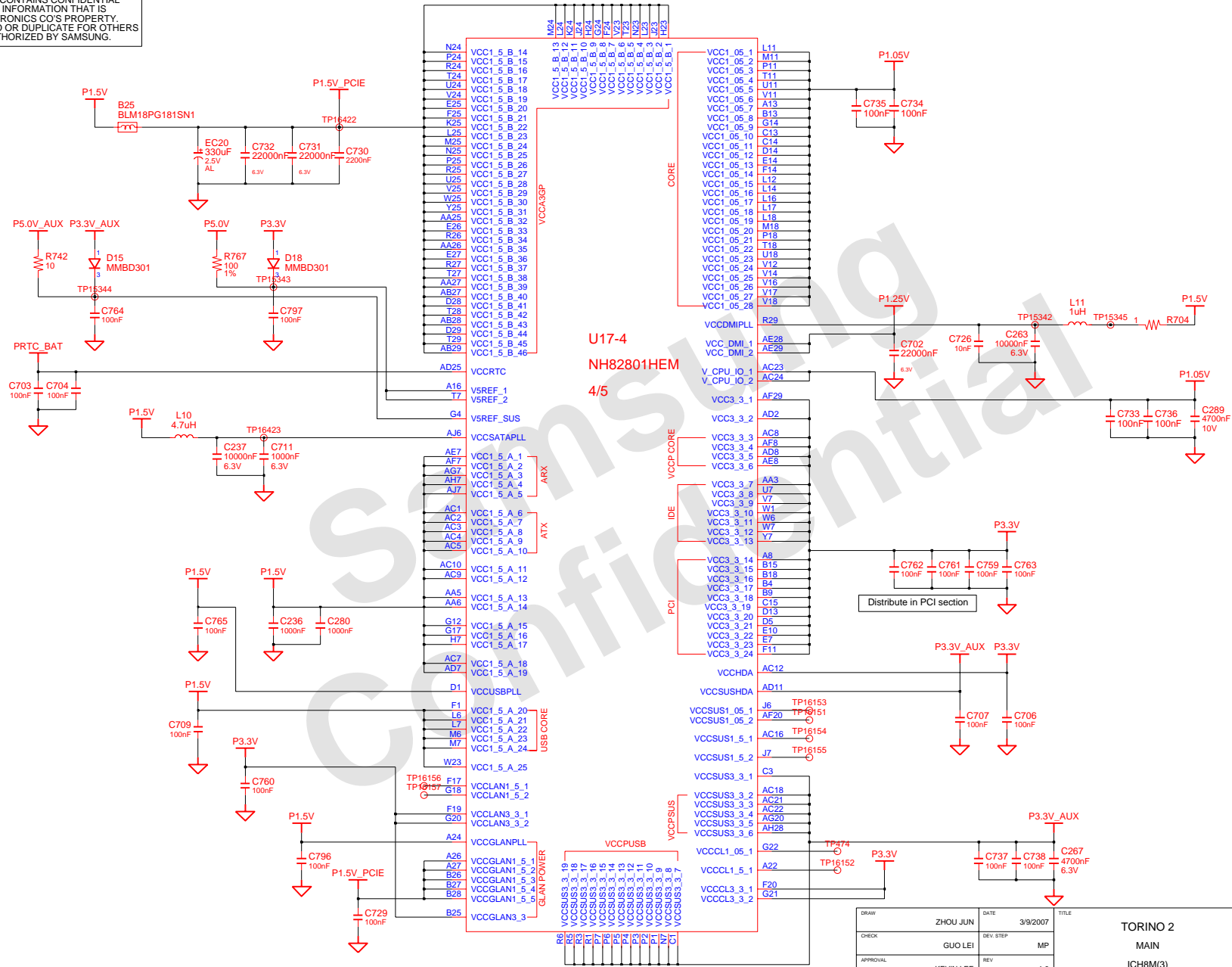
DRAW	ZHOU JUN	DATE	3/9/2007	TITLE	TORINO 2	SAMSUNG
CHECK	GUO LEI	DEV STEP	MP	MAIN	MAIN	ELECTRONICS
APPROVAL	KEVIN LEE	REV	1.0	ICH8M(1)	PART NO.	BA41-00727/8A
MODULE CODE		LAST EDIT			PAGE	24 OF 53
				March 9, 2007 12:03:21 PM		

SAMSUNG PROPRIETARY
THIS DOCUMENT CONTAINS CONFIDENTIAL
PROPRIETARY INFORMATION THAT IS
SAMSUNG ELECTRONICS CO'S PROPERTY.
DO NOT DISCLOSE TO OR DUPLICATE FOR OTHERS
EXCEPT AS AUTHORIZED BY SAMSUNG.

AC caps : PCIE need to be within 250mils of the driver
Resistor for Test : Place Stufing Option to minimize stubs

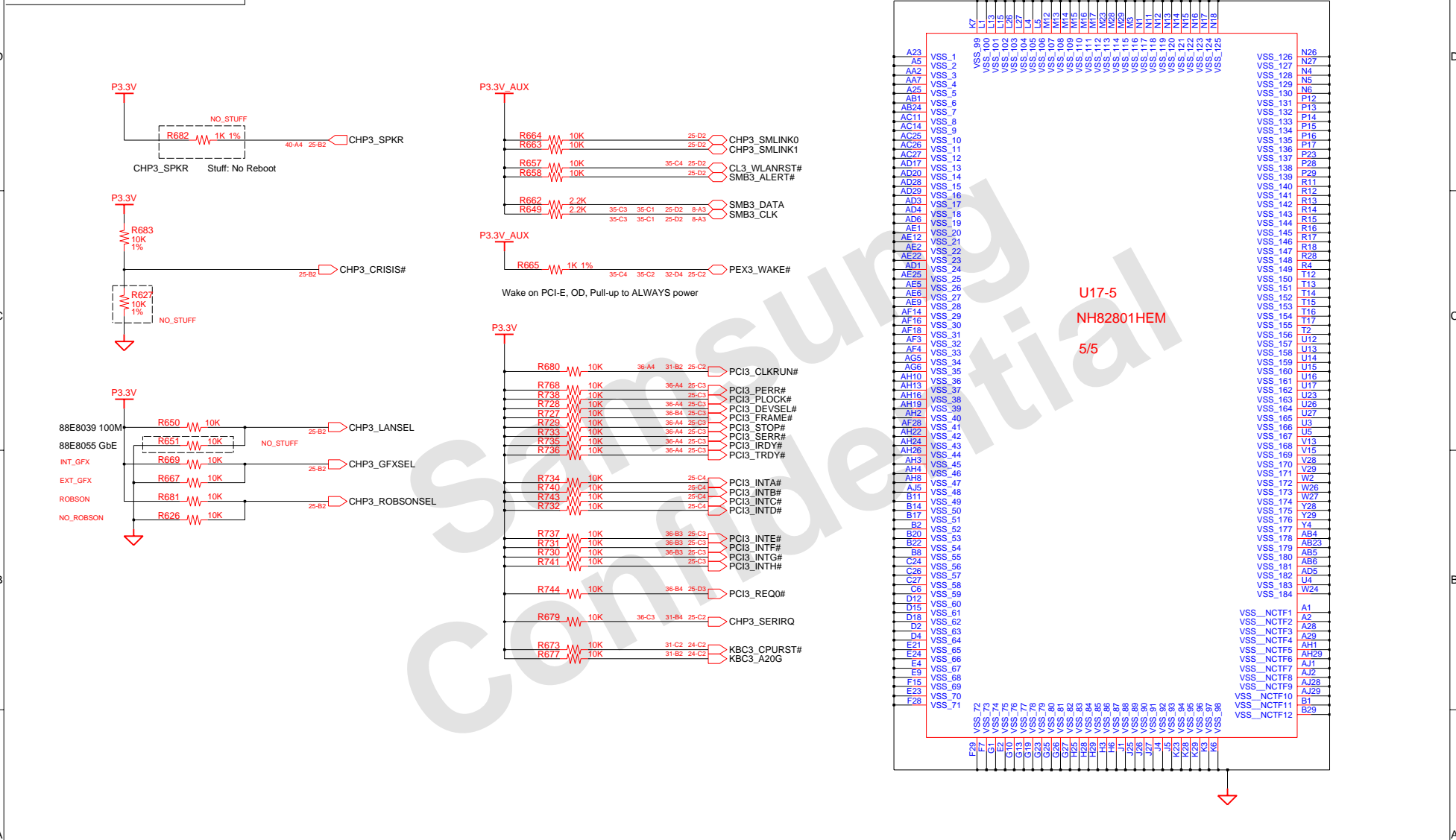


SAMSUNG PROPRIETARY
THIS DOCUMENT CONTAINS CONFIDENTIAL
PROPRIETARY INFORMATION THAT IS
SAMSUNG ELECTRONICS CO'S PROPERTY.
DO NOT DISCLOSE TO OR DUPLICATE FOR OTHERS
EXCEPT AS AUTHORIZED BY SAMSUNG.



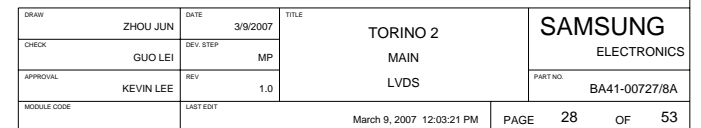
DRAW	ZHOU JUN	DATE	3/9/2007	TITLE	TORINO 2	SAMSUNG
CHECK	GUO LEI	DEV STEP	MP	MAIN	MAIN	ELECTRONICS
APPROVAL	KEVIN LEE	REV	1.0	ICH8M(3)	PART NO.	BA41-00727/8A
MODULE CODE		LAST EDIT			PAGE	26 OF 53
				March 9, 2007 12:03:21 PM		

SAMSUNG PROPRIETARY
THIS DOCUMENT CONTAINS CONFIDENTIAL
PROPRIETARY INFORMATION THAT IS
SAMSUNG ELECTRONICS CO'S PROPERTY.
DO NOT DISCLOSE TO OR DUPLICATE FOR OTHERS
EXCEPT AS AUTHORIZED BY SAMSUNG.

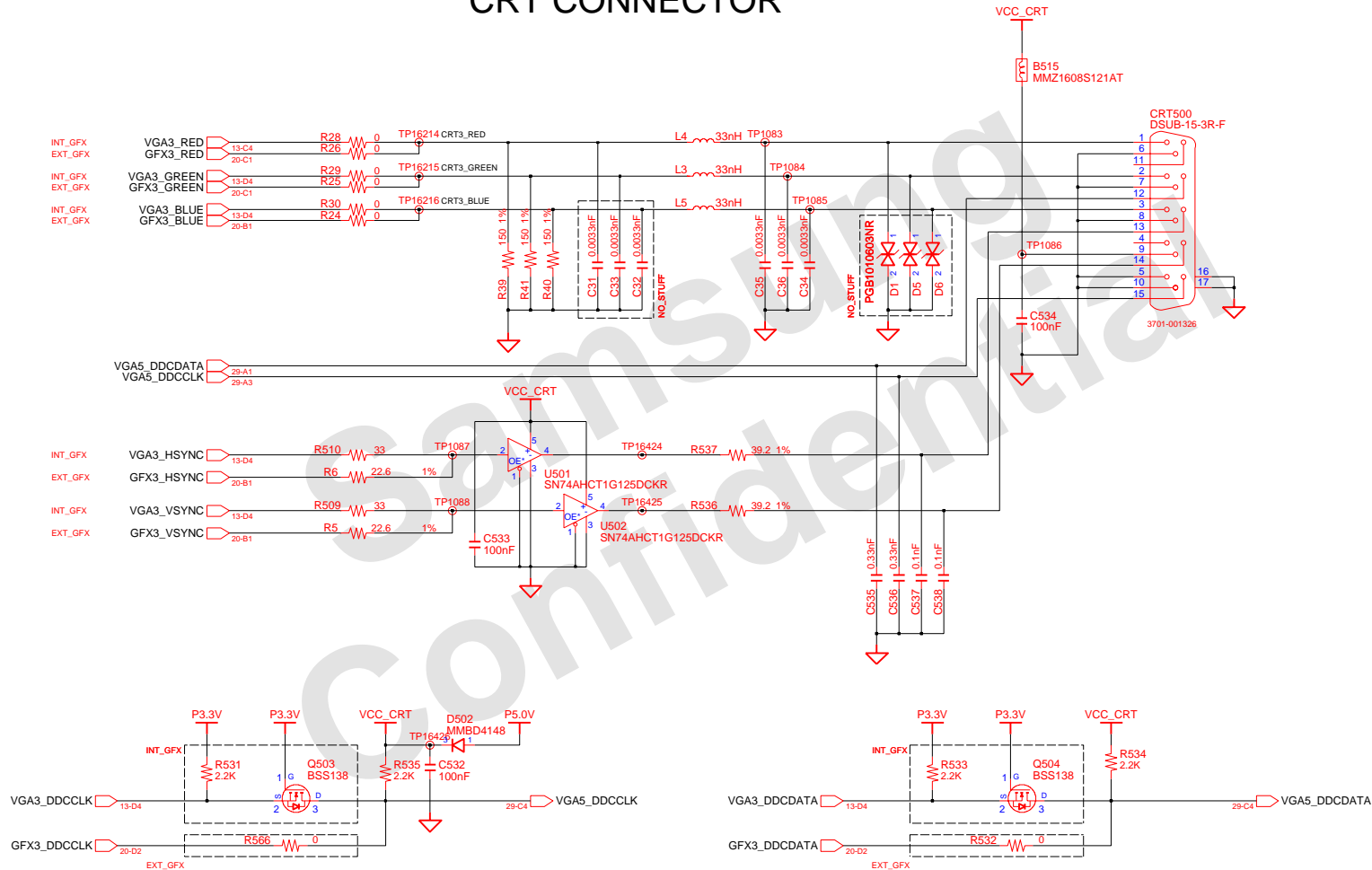


DRAW	ZHOU JUN	DATE	3/9/2007	TITLE	TORINO 2	SAMSUNG ELECTRONICS PART NO. BA41-00727/8A
CHECK	GUO LEI	DEV. STEP	MP	MAIN		
APPROVAL	KEVIN LEE	REV	1.0	ICH8M(4)		
MODULE CODE		LAST EDIT				
March 9, 2007 12:03:21 PM					PAGE	27 OF 53

WXGA LCD CONNECTOR



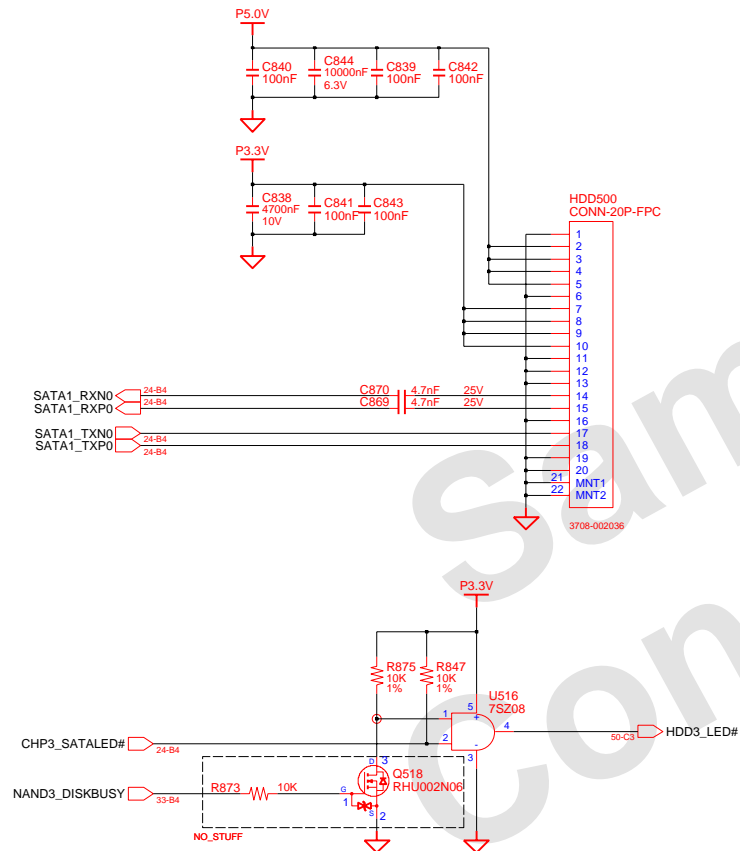
CRT CONNECTOR



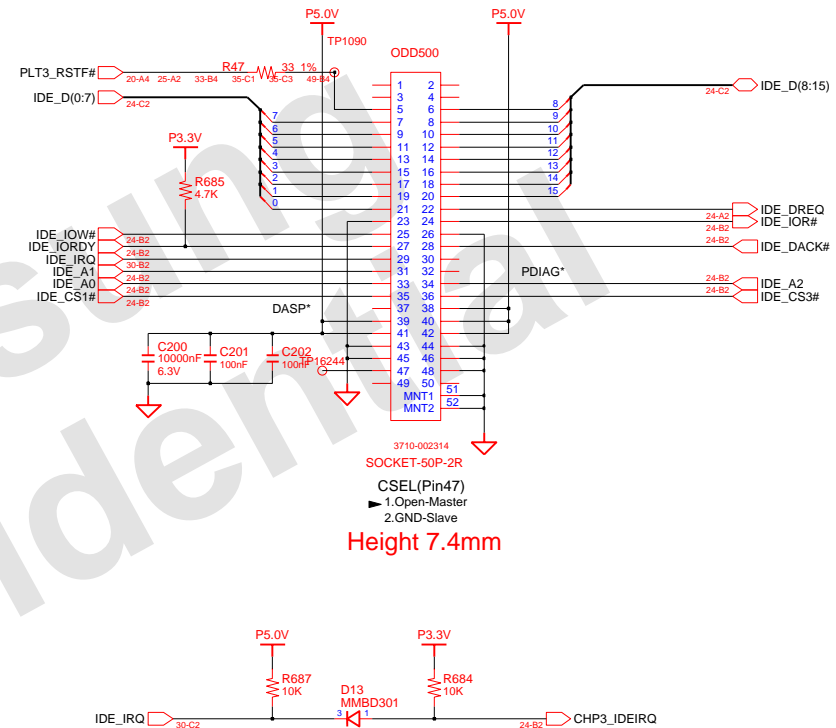
DRAW	ZHOU JUN	DATE	3/9/2007	TITLE	TORINO 2	SAMSUNG
CHECK	GUO LEI	DEV. STEP	MP	MAIN	ELECTRONICS	
APPROVAL	KEVIN LEE	REV	1.0	CRT		
MODULE CODE		LAST EDIT				
			March 9, 2007 12:03:21 PM	PAGE	29	OF 53

SAMSUNG PROPRIETARY
THIS DOCUMENT CONTAINS CONFIDENTIAL
PROPRIETARY INFORMATION THAT IS
SAMSUNG ELECTRONICS CO.'S PROPERTY.
DO NOT DISCLOSE TO OR DUPLICATE FOR OTHERS
EXCEPT AS AUTHORIZED BY SAMSUNG.

Main to HDD



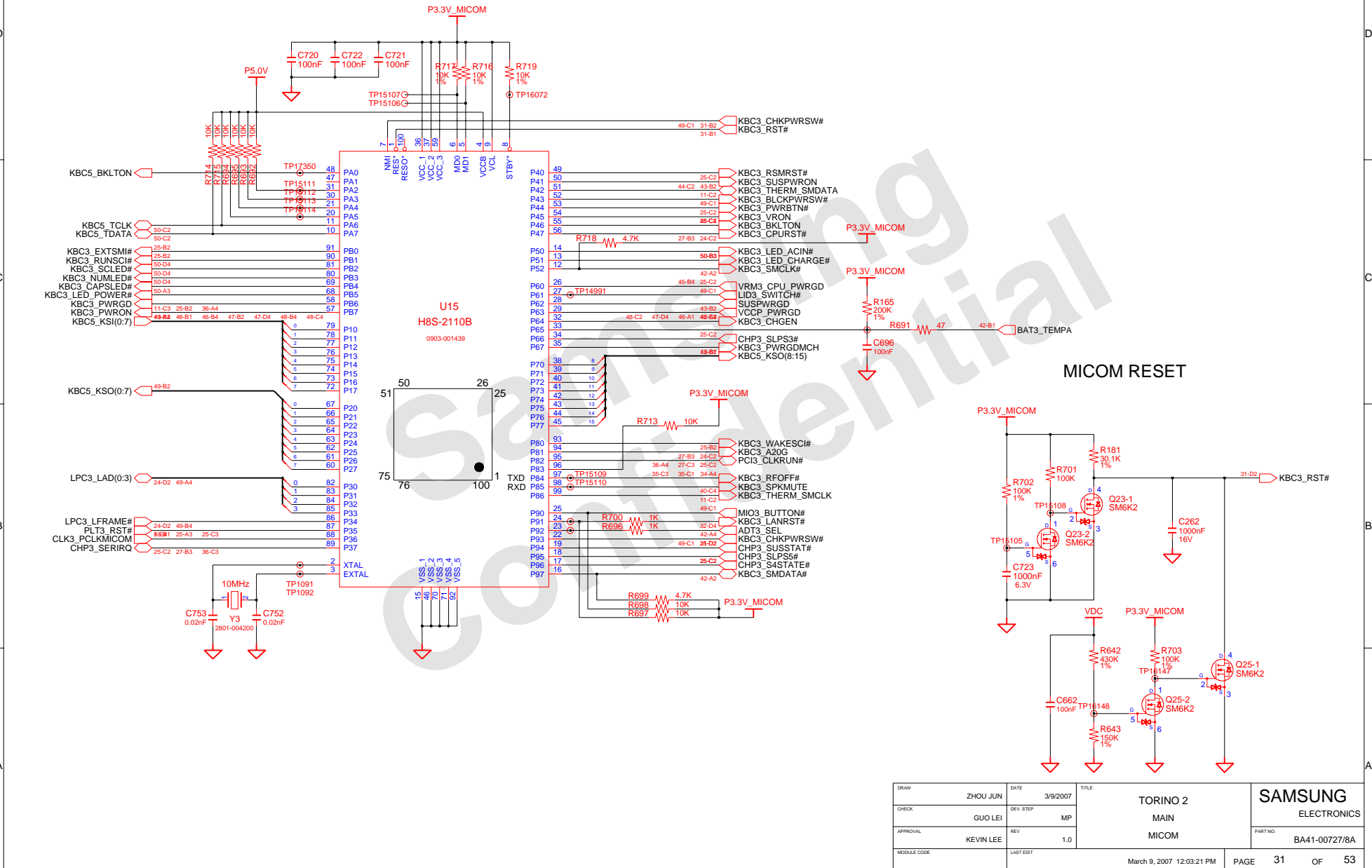
Main to ODD



Height 7.4mm

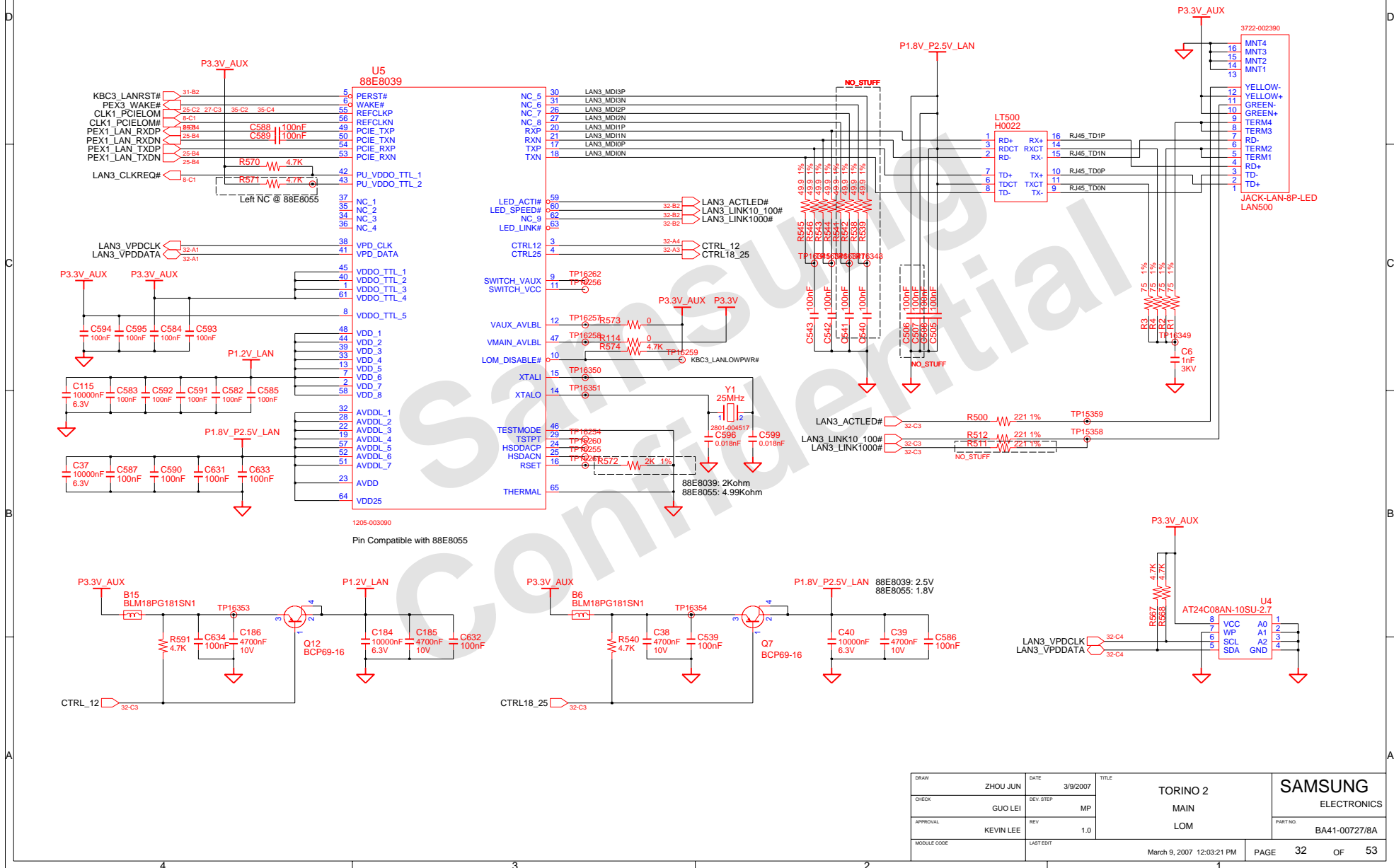
DRAW	ZHOU JUN	DATE	3/9/2007	TITLE	TORINO 2	SAMSUNG
CHECK	GUO LEI	DEV. STEP	MP	MAIN	ELECTRONICS	
APPROVAL	KEVIN LEE	REV	1.0	IDE	PART NO.	BA41-00727/8A
MODULE CODE		LAST EDIT				
				March 9, 2007 12:03:21 PM	PAGE	30 OF 53

SAMSUNG PROPRIETARY
THIS DOCUMENT CONTAINS CONFIDENTIAL
PROPRIETARY INFORMATION THAT IS
SAMSUNG ELECTRONICS CO.'S PROPERTY.
DO NOT DISCLOSE TO OR DUPLICATE FOR OTHERS
EXCEPT AS AUTHORIZED BY SAMSUNG.



DRAW	ZHOU JUN	DATE	3/9/2007	TITLE	TORINO 2	SAMSUNG
CHECK	GUO LEI	DEV. STEP	MP	MAIN	MAIN	ELECTRONICS
APPROVAL	KEVIN LEE	REV	1.0	MICOM		
MODULE CODE		LAST EDIT				
				March 9, 2007 12:03:21 PM	PAGE	31 OF 53

SAMSUNG PROPRIETARY
THIS DOCUMENT CONTAINS CONFIDENTIAL
PROPRIETARY INFORMATION THAT IS
SAMSUNG ELECTRONICS CO.'S PROPERTY.
DO NOT DISCLOSE TO OR DUPLICATE FOR OTHERS
EXCEPT AS AUTHORIZED BY SAMSUNG.

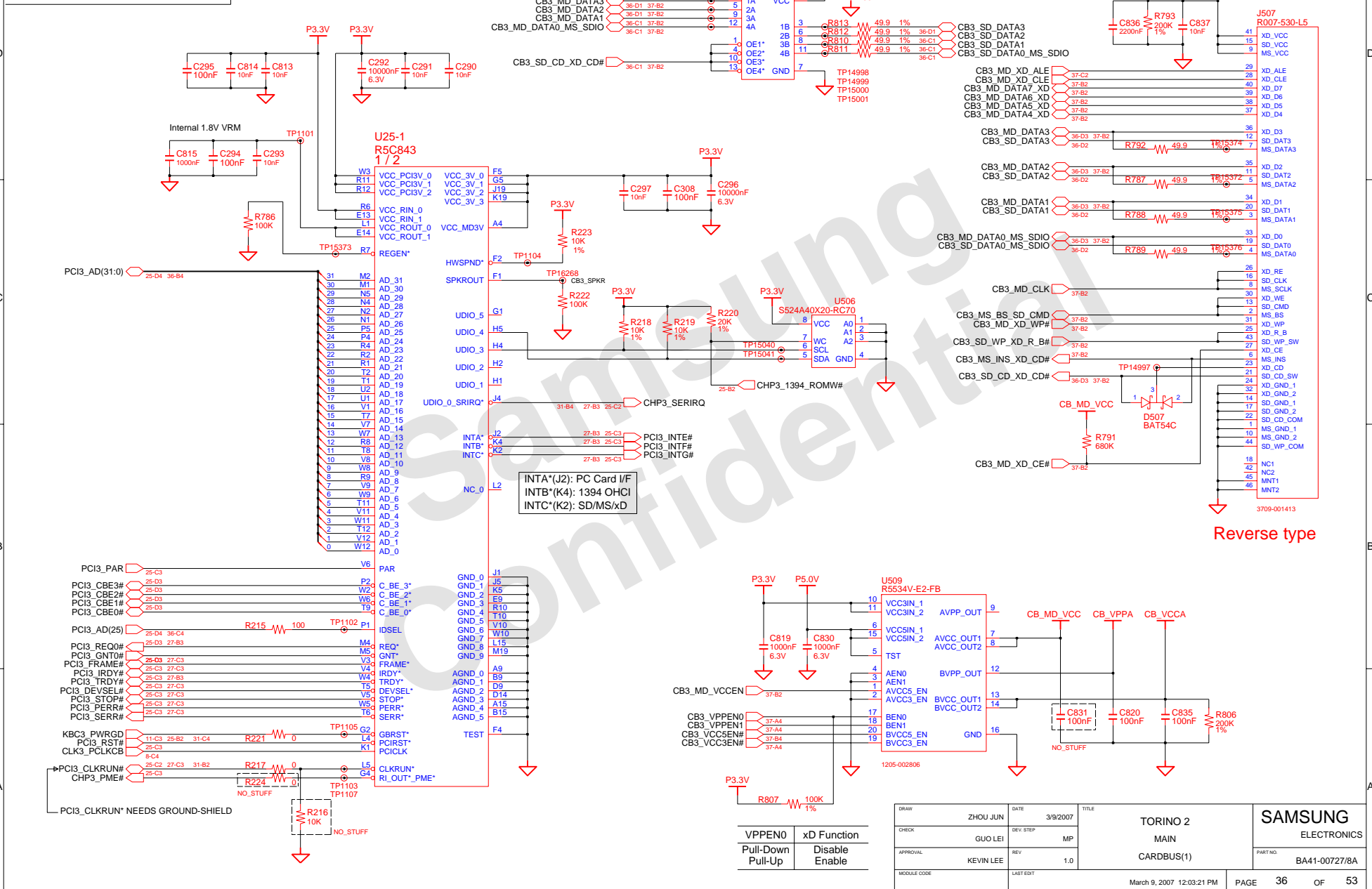


3

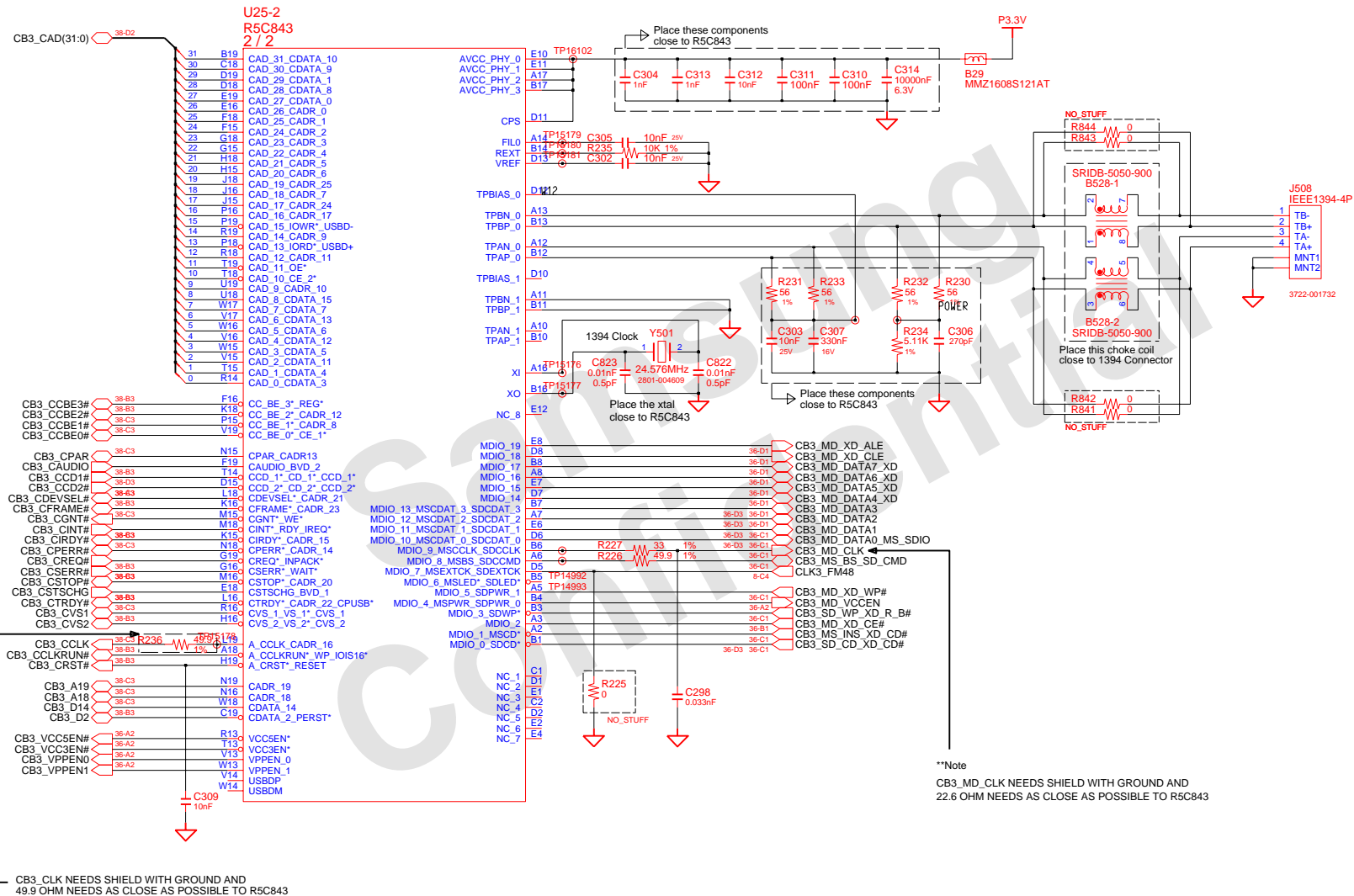




SAMSUNG PROPRIETARY
THIS DOCUMENT CONTAINS CONFIDENTIAL
PROPRIETARY INFORMATION THAT IS
SAMSUNG ELECTRONICS CO.'S PROPERTY.
DO NOT DISCLOSE TO OR DUPLICATE FOR OTHERS
EXCEPT AS AUTHORIZED BY SAMSUNG.



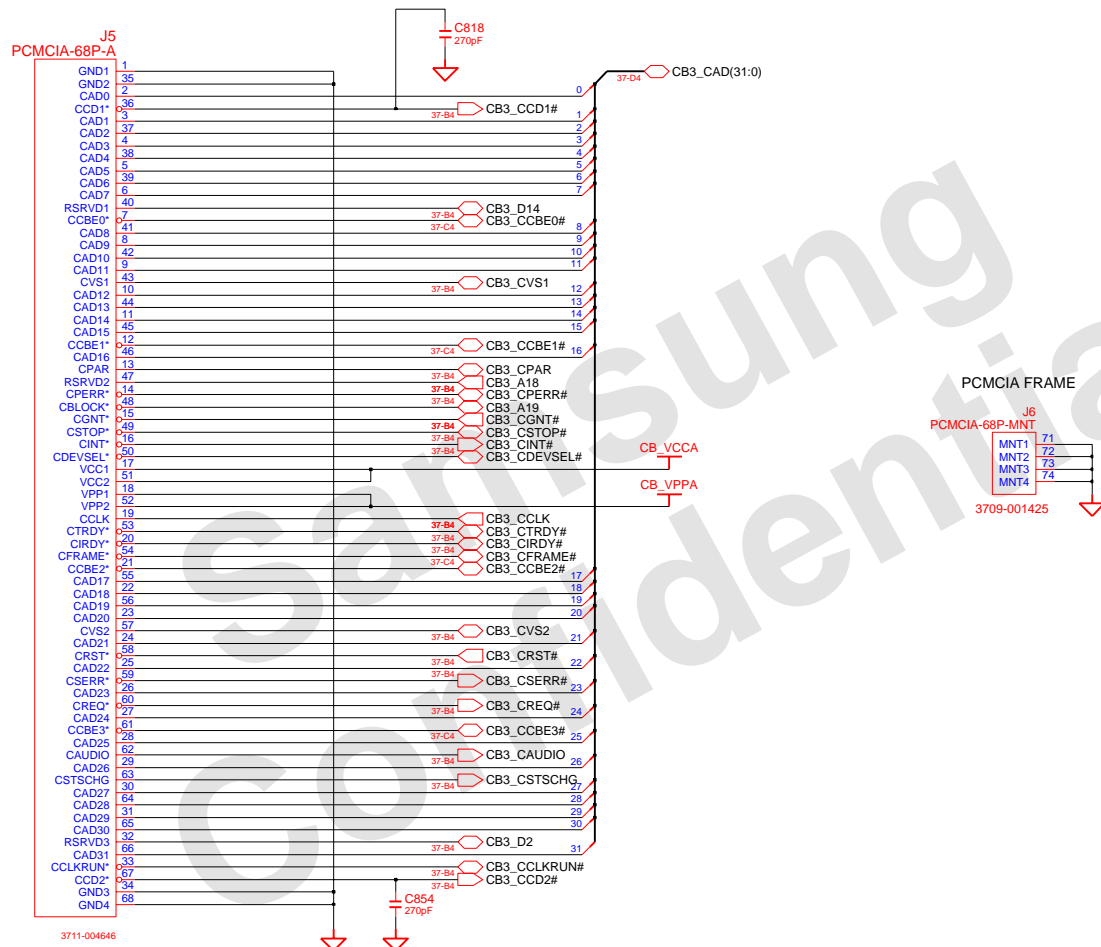
SAMSUNG PROPRIETARY
THIS DOCUMENT CONTAINS CONFIDENTIAL
PROPRIETARY INFORMATION THAT IS
SAMSUNG ELECTRONICS CO.'S PROPERTY.
DO NOT DISCLOSE TO OR DUPLICATE FOR OTHERS
EXCEPT AS AUTHORIZED BY SAMSUNG.



**Note
CB3_MD_CLK NEEDS SHIELD WITH GROUND AND
22.6 OHM NEEDS AS CLOSE AS POSSIBLE TO R5C843

DRAW	ZHOU JUN	DATE	3/9/2007	TITLE	TORINO 2	SAMSUNG
CHECK	GUO LEI	DEV STEP	MP		MAIN	ELECTRONICS
APPROVAL	KEVIN LEE	REV	1.0		CARDBUS(2)	PART NO.
MODULE CODE		LAST EDIT				BA41-00727/8A
				March 9, 2007 12:03:21 PM	PAGE	37 OF 53

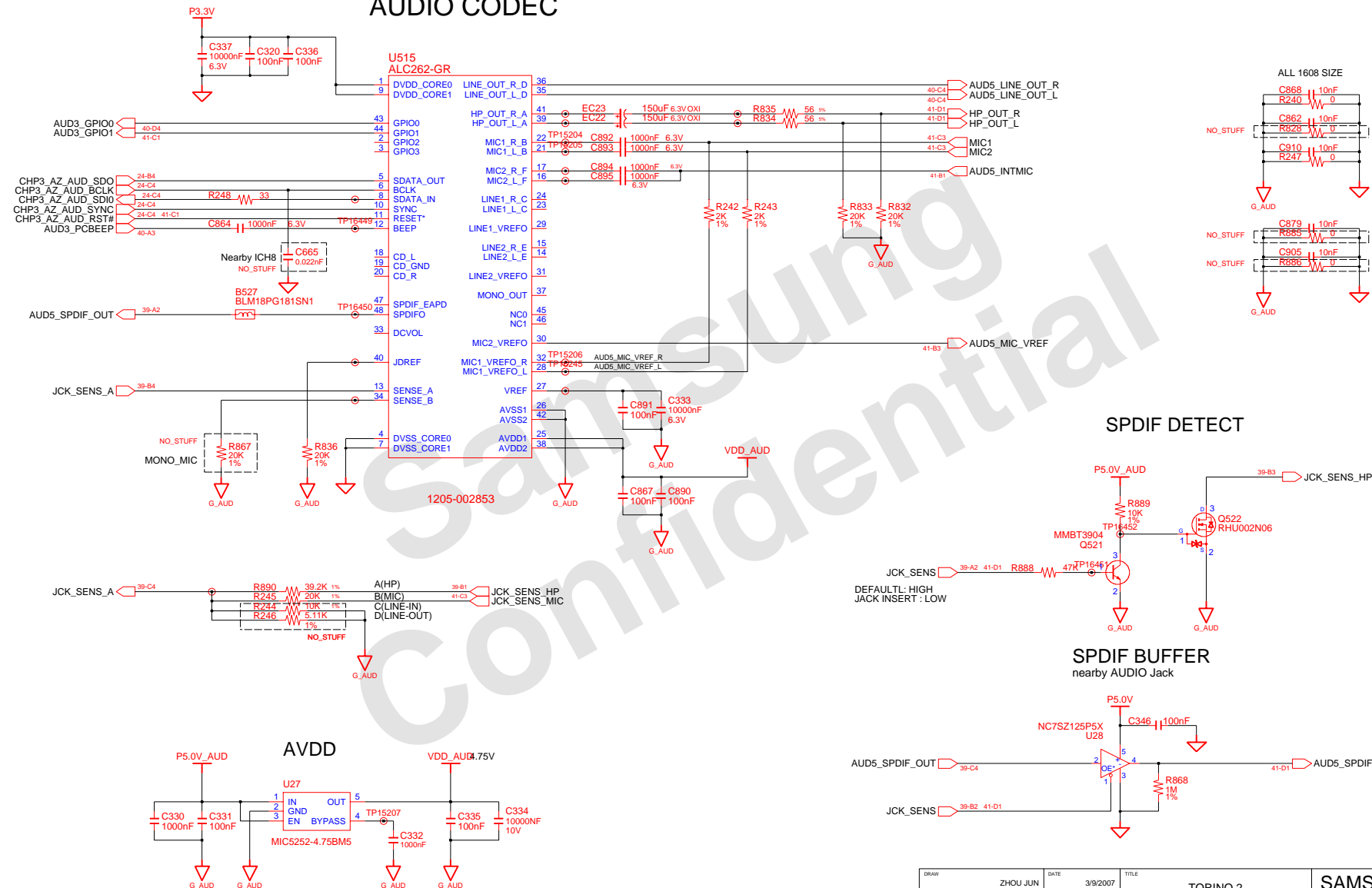
SAMSUNG PROPRIETARY
THIS DOCUMENT CONTAINS CONFIDENTIAL
PROPRIETARY INFORMATION THAT IS
SAMSUNG ELECTRONICS CO.'S PROPERTY.
DO NOT DISCLOSE TO OR DUPLICATE FOR OTHERS
EXCEPT AS AUTHORIZED BY SAMSUNG.



DRAW	ZHOU JUN	DATE	3/9/2007	TITLE	TORINO 2	SAMSUNG
CHECK	GUO LEI	DEV. STEP	MP	MAIN	ELECTRONICS	
APPROVAL	KEVIN LEE	REV	1.0	CARDBUS (3)	PART NO.	BA41-00727/8A
MODULE CODE		LAST EDIT	March 9, 2007 12:03:21 PM	PAGE	38	OF 53

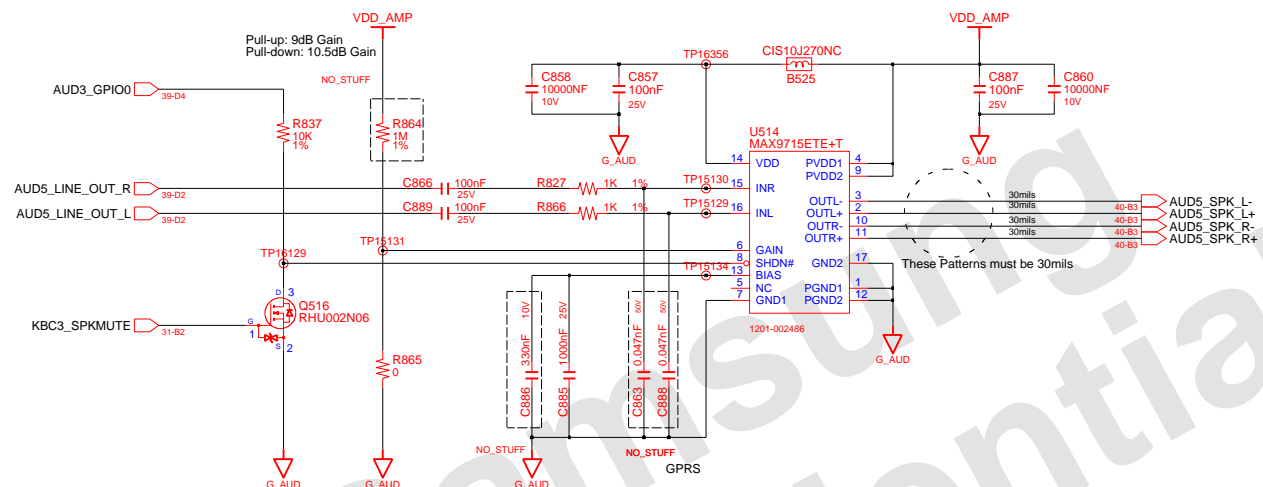
SAMSUNG PROPRIETARY
THIS DOCUMENT CONTAINS CONFIDENTIAL
PROPRIETARY INFORMATION THAT IS
SAMSUNG ELECTRONICS CO'S PROPERTY.
DO NOT DISCLOSE TO OR DUPLICATE FOR OTHERS
EXCEPT AS AUTHORIZED BY SAMSUNG.

AUDIO CODEC

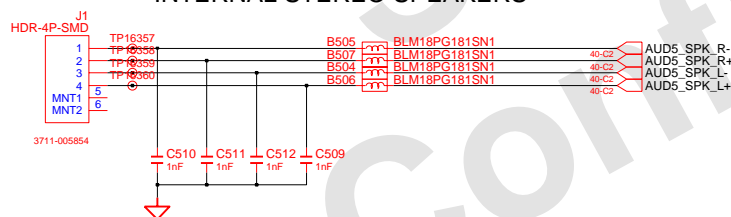


SAMSUNG PROPRIETARY
THIS DOCUMENT CONTAINS CONFIDENTIAL
PROPRIETARY INFORMATION THAT IS
SAMSUNG ELECTRONICS CO'S PROPERTY.
DO NOT DISCLOSE TO OR DUPLICATE FOR OTHERS
EXCEPT AS AUTHORIZED BY SAMSUNG.

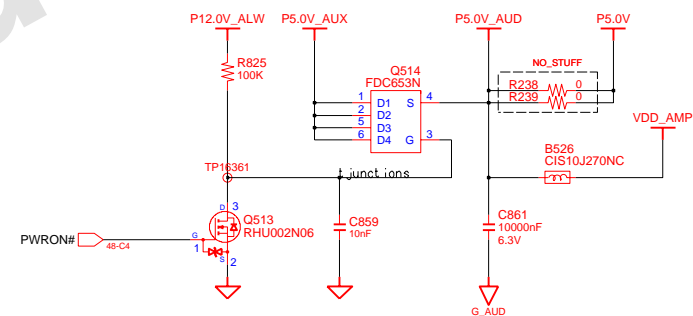
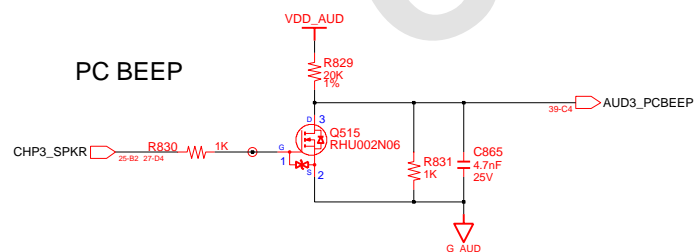
AUDIO AMP



INTERNAL STEREO SPEAKERS

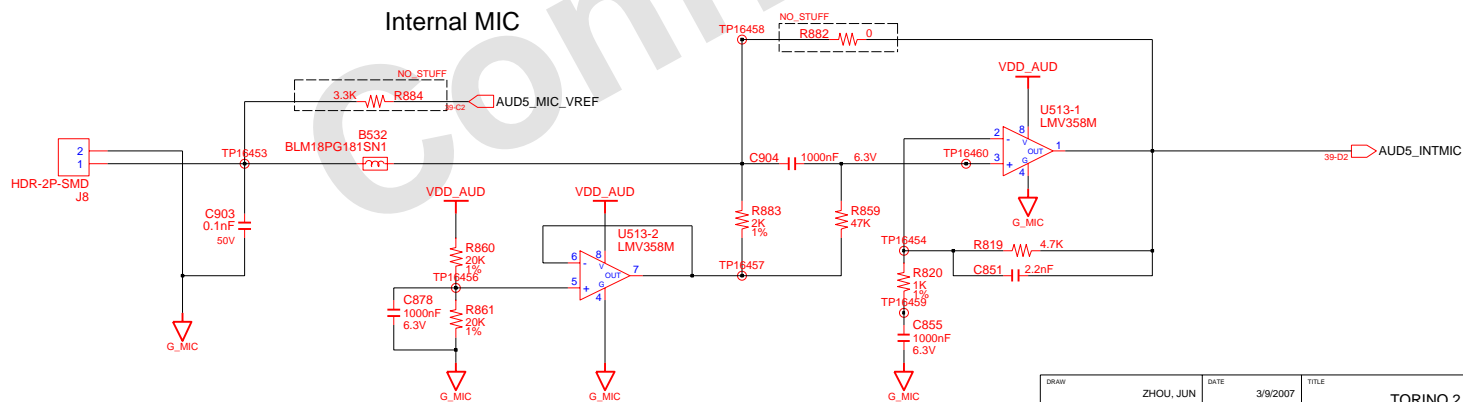
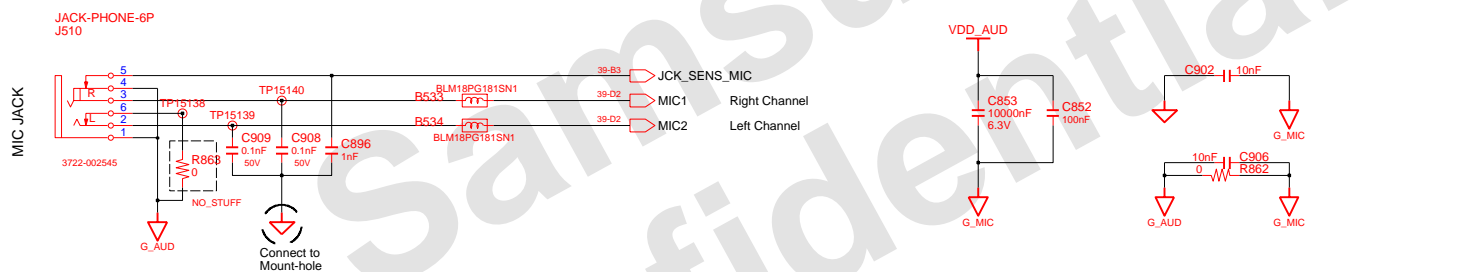
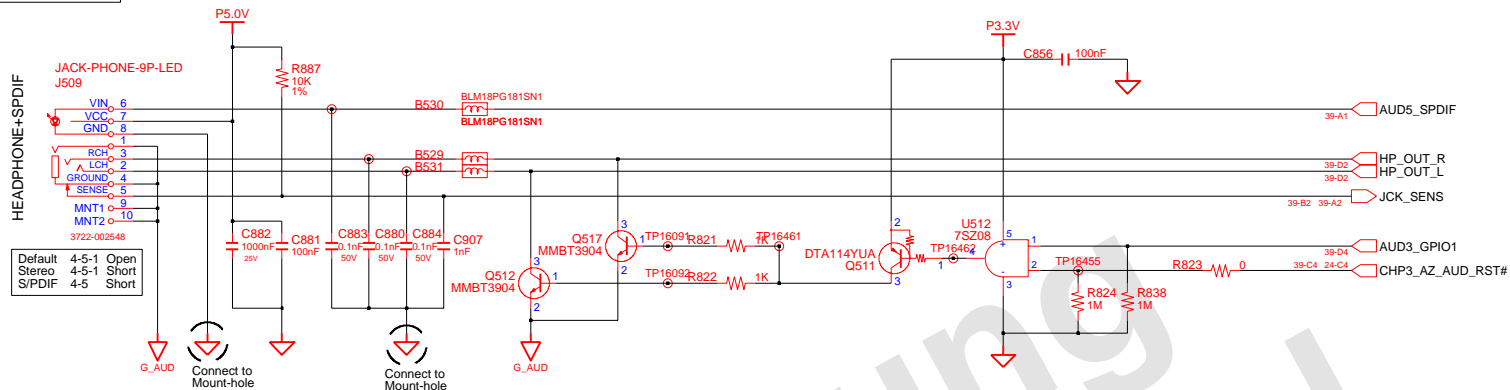


PC BEEP



DRYAN	ZHOU JUN	DATE	3/9/2007	TITLE TORINO 2 MAIN AUDIO AMPLIFIER	SAMSUNG ELECTRONICS PART NO. BA41-00727/8A
CHECK	GUO LEI	DEV. STEP	MP		
APPROVAL	KEVIN LEE	REV	1.0		
MODULE CODE	LAST EDIT				
				March 9, 2007 12:03:21 PM	PAGE 40 OF 53

SAMSUNG PROPRIETARY
THIS DOCUMENT CONTAINS CONFIDENTIAL
PROPRIETARY INFORMATION THAT IS
SAMSUNG ELECTRONICS CO.'S PROPERTY.
DO NOT DISCLOSE TO OR DUPLICATE FOR OTHERS
EXCEPT AS AUTHORIZED BY SAMSUNG.

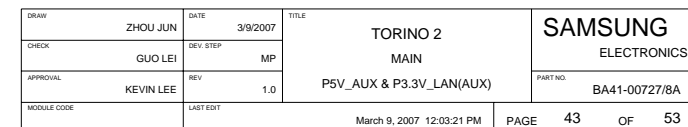


DRAW	ZHOU, JUN	DATE	3/9/2007	TITLE	TORINO 2 MAIN AUDIO JACK	SAMSUNG ELECTRONICS
CHECK	GUO, LEI	DEV. STEP	MP			PART NO. BA41-00727/8A
APPROVAL	LEE, KEVIN	REV	1.0			
MODULE CODE		LAST EDIT				
				March 9, 2007 12:03:21 PM	PAGE 41 OF 53	

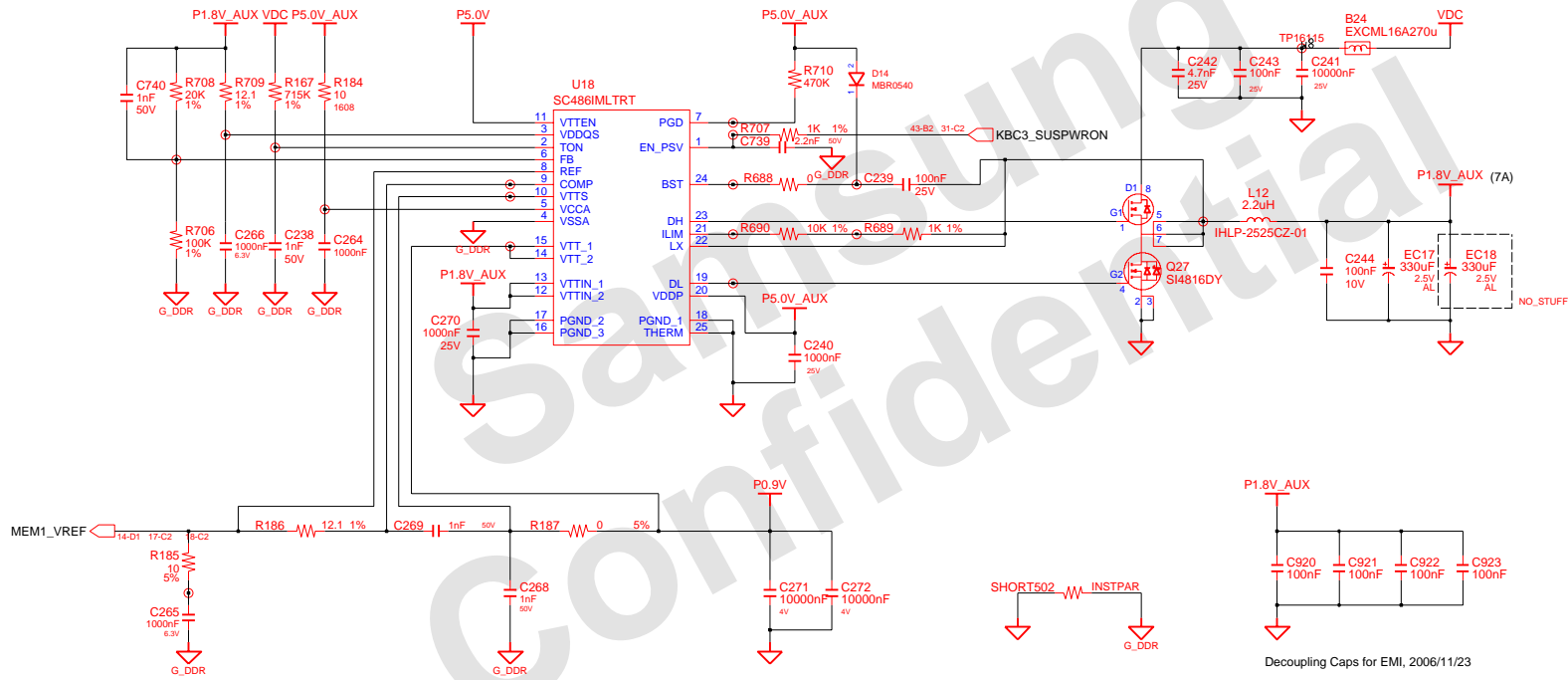
CHARGER & POWER MANAGEMENT



P5V_AUX & P3.3V_AUX

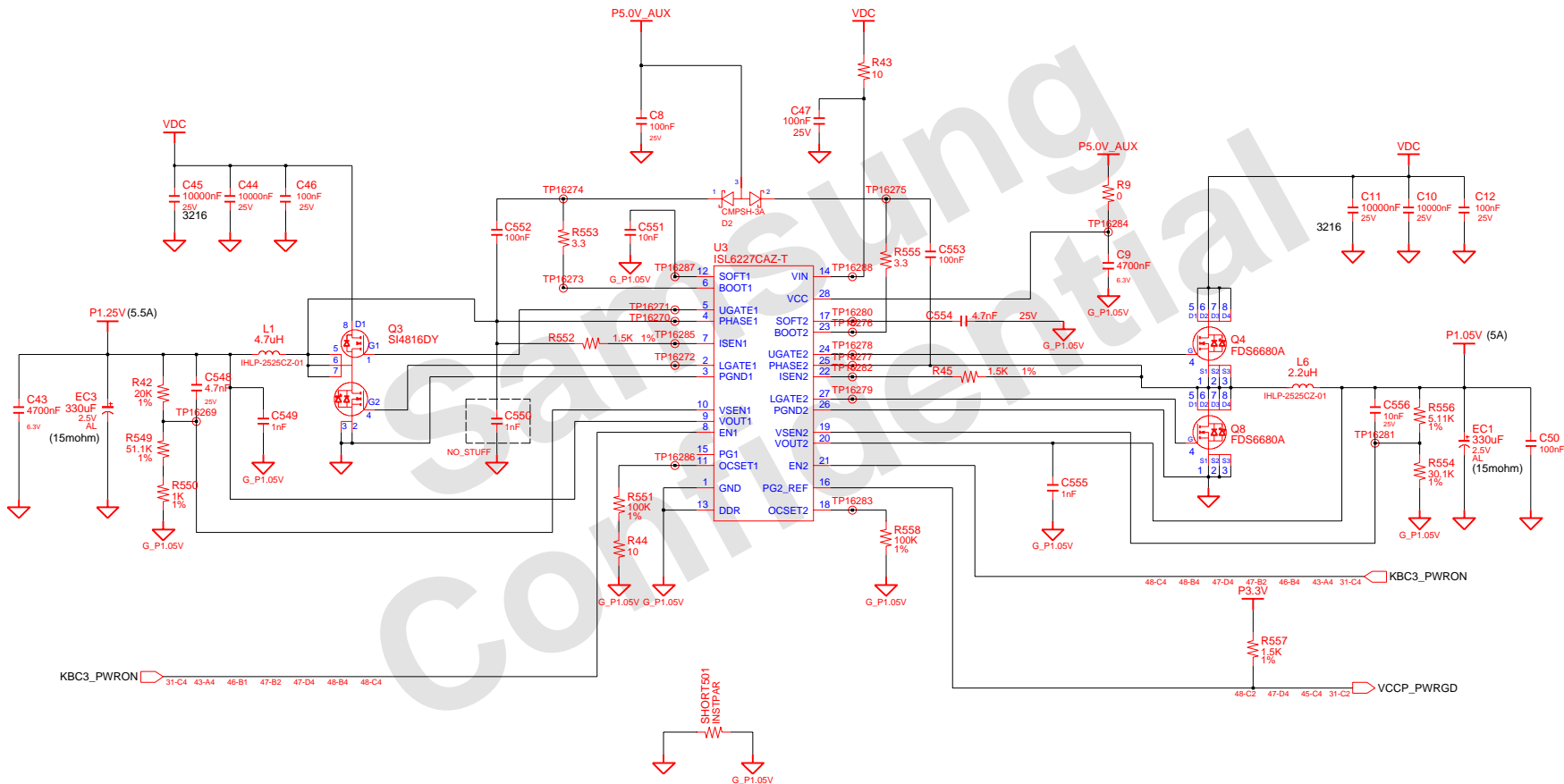


DDR2 POWER



DRAW	ZHOU JUN	DATE	3/9/2007	TITLE	TORINO 2 MAIN DDR2 POWER	SAMSUNG ELECTRONICS
CHECK	GUO LEI	DEV. STEP	MP			PART NO. BA41-00727/8A
APPROVAL	KEVIN LEE	REV	1.0			
MODULE CODE		LAST EDIT				
				March 9, 2007 12:03:21 PM	PAGE 44 OF 53	

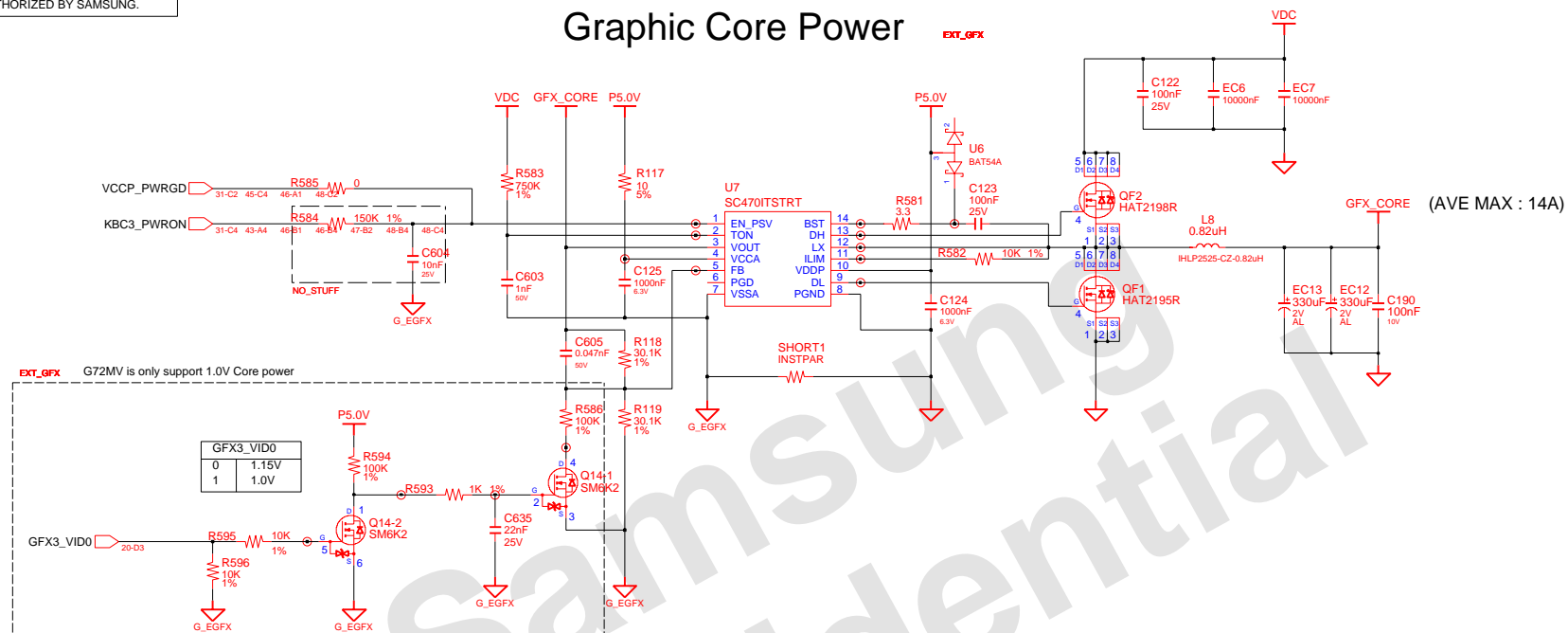
P1.25V & P1.05V



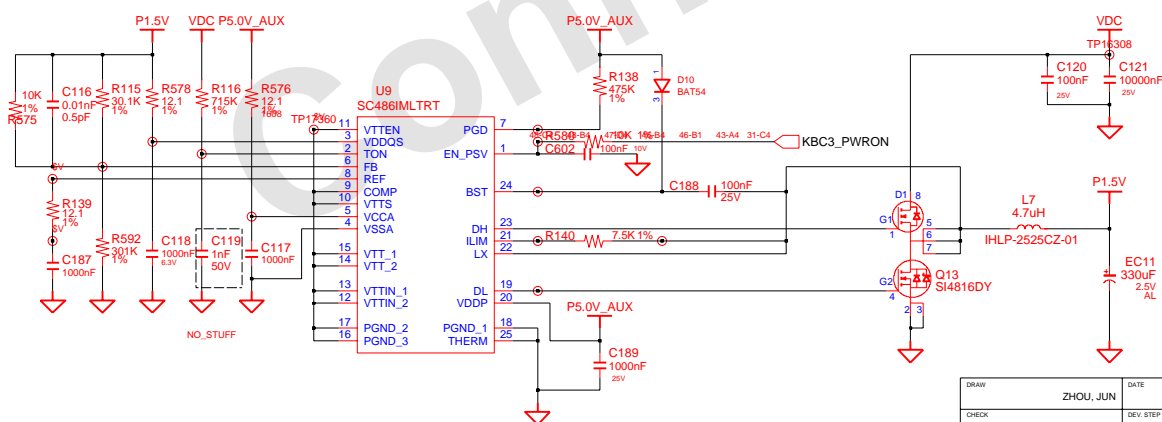
DRAW	ZHOU JUN	DATE	3/9/2007	TITLE	TORINO 2	SAMSUNG
CHECK	GUO LEI	DEV. STEP	MP	MAIN	MAIN	ELECTRONICS
APPROVAL	KEVIN LEE	REV	1.0	P1.25V & P1.05V	PART NO.	BA41-00727/8A
MODULE CODE		LAST EDIT	March 9, 2007 12:03:21 PM	PAGE	46	OF 53

SAMSUNG PROPRIETARY
THIS DOCUMENT CONTAINS CONFIDENTIAL
PROPRIETARY INFORMATION THAT IS
SAMSUNG ELECTRONICS CO'S PROPERTY.
DO NOT DISCLOSE TO OR DUPLICATE FOR OTHERS
EXCEPT AS AUTHORIZED BY SAMSUNG.

Graphic Core Power

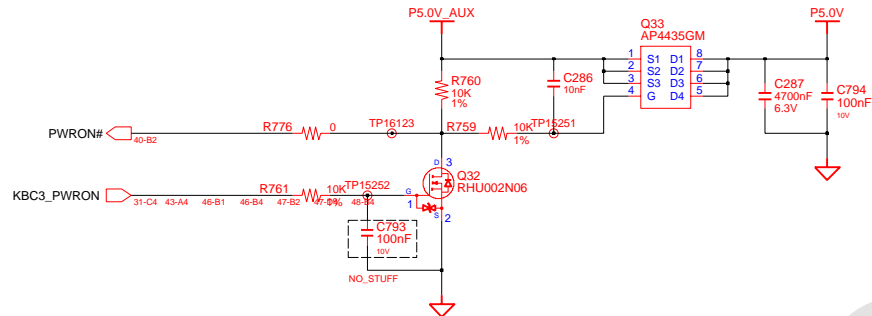


P1.5V

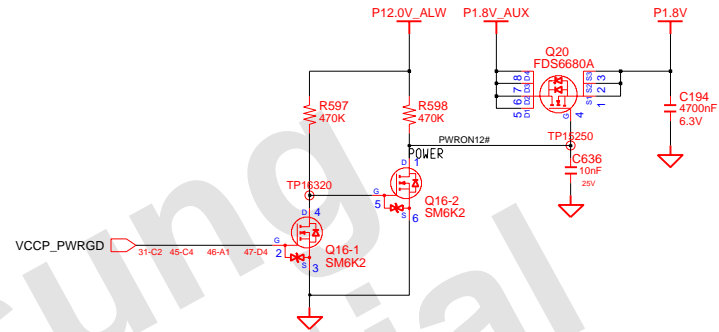


DRAW	ZHOU, JUN	DATE	3/9/2007	TITLE TORINO 2 MAIN GFX_CORE & P1.5V	SAMSUNG ELECTRONICS PART NO. BA41-00727/8A
CHECK	GUO, LEI	DEV STEP	MP		
APPROVAL	LEE, KEVIN	REV	1.0		
MODULE CODE	LAST EDIT				
March 9, 2007 12:03:21 PM				PAGE	47 OF 53

Switched Power On (P5V)

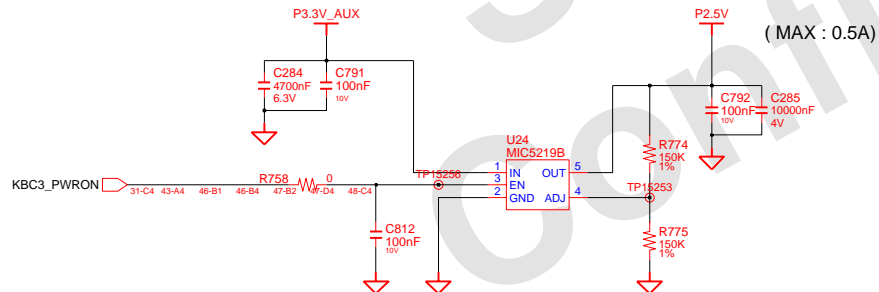


Switched Power On (P1.8V)



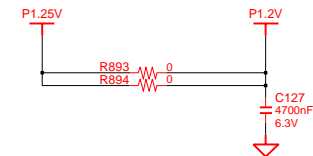
Switched Power On (P2.5V)

NO_STUFF
It's only used for G72M



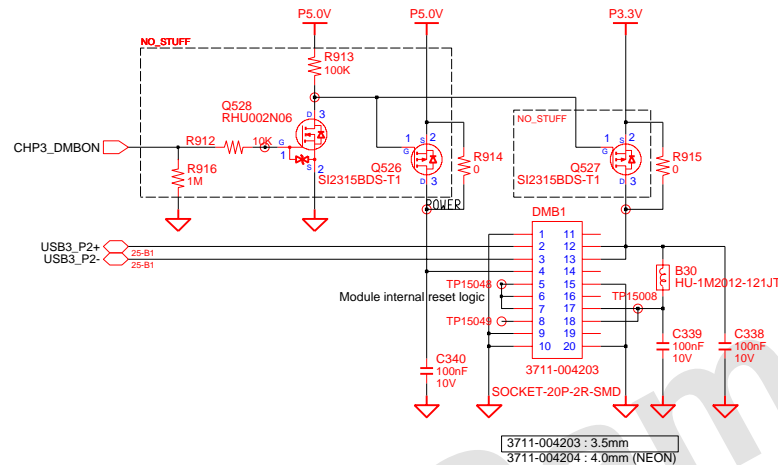
Switched Power On (P1.2V)

EXT_GFX

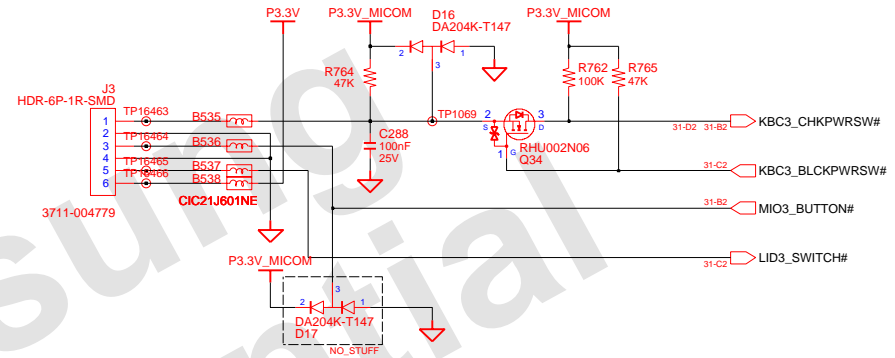


DRAW	ZHOU JUN	DATE	3/9/2007	TITLE	TORINO 2 MAIN SWITCHED POWER	SAMSUNG ELECTRONICS
CHECK	GUO LEI	DEV. STEP	MP			PART NO. BA41-00727/8A
APPROVAL	KEVIN LEE	REV	1.0			
MODULE CODE		LAST EDIT	March 9, 2007 12:03:21 PM	PAGE	48	OF 53

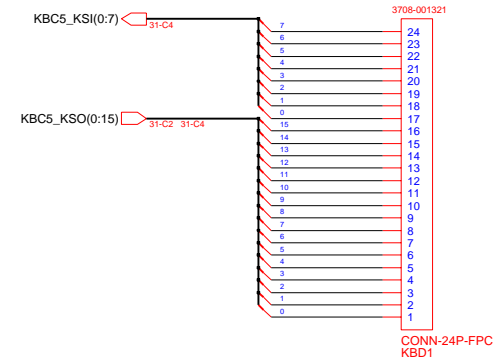
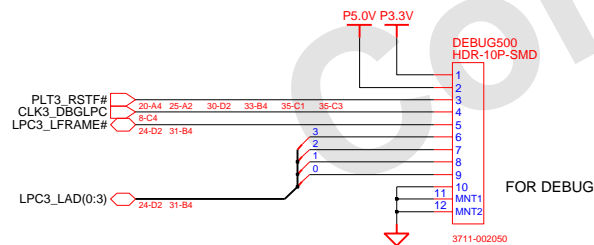
OPTION: DMB INTERFACE



Power Switch Connector

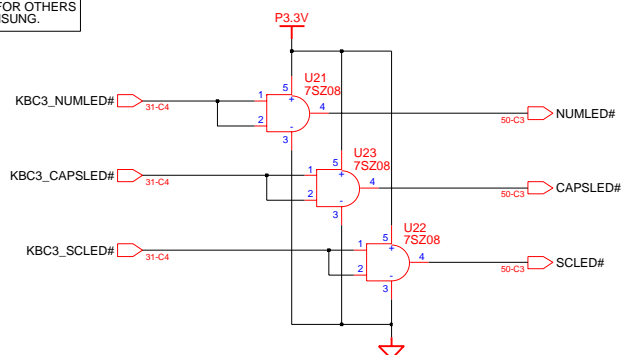


KEYBOARD

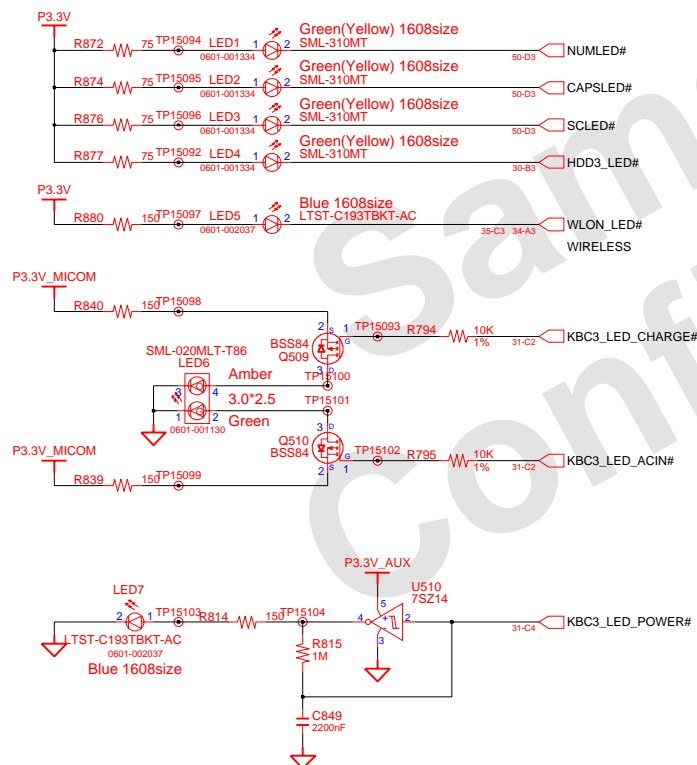


DRAW	ZHOU JUN	DATE	3/9/2007	TITLE	TORINO 2	SAMSUNG
CHECK	GUO LEI	DEV. STEP	MP	MAIN	ELECTRONICS	
APPROVAL	KEVIN LEE	REV	1.0	DMB & KBD & DEBUG & POWER S/W	PART NO.	BA41-00727/8A
MODULE CODE		LAST EDIT	March 9, 2007 12:03:21 PM	PAGE	49	OF 53

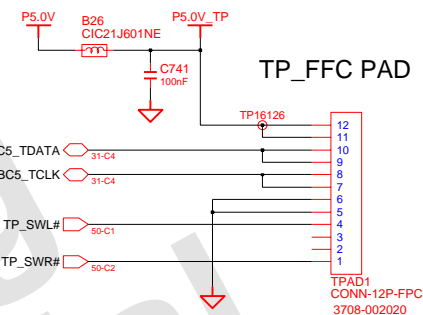
SAMSUNG PROPRIETARY
THIS DOCUMENT CONTAINS CONFIDENTIAL
PROPRIETARY INFORMATION THAT IS
SAMSUNG ELECTRONICS CO'S PROPERTY.
DO NOT DISCLOSE TO OR DUPLICATE FOR OTHERS
EXCEPT AS AUTHORIZED BY SAMSUNG.



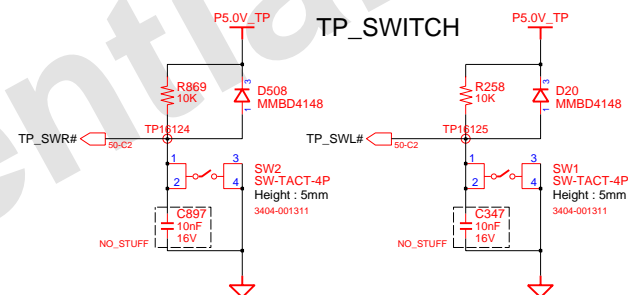
LEDS



TOUCH PAD



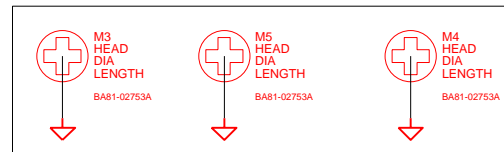
TP_SWITCH



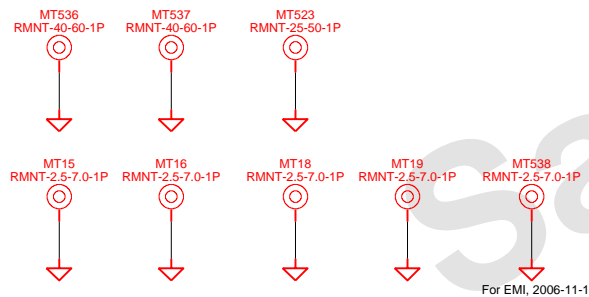
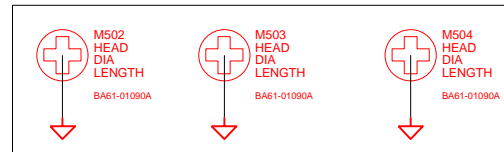
DRAWN	ZHOU JUN	DATE	3/9/2007	TITLE TORINO 2 MAIN TOUCH PAD & LEDs	SAMSUNG ELECTRONICS PART NO. BA41-00727/8A
CHECK	GUO LEI	DEV STEP	MP		
APPROVAL	KEVIN LEE	REV	1.0		
MODULE CODE	LAST EDIT				
				March 9, 2007 12:03:21 PM	PAGE 50 OF 53

SAMSUNG PROPRIETARY
THIS DOCUMENT CONTAINS CONFIDENTIAL
PROPRIETARY INFORMATION THAT IS
SAMSUNG ELECTRONICS CO.'S PROPERTY.
DO NOT DISCLOSE TO OR DUPLICATE FOR OTHERS
EXCEPT AS AUTHORIZED BY SAMSUNG.

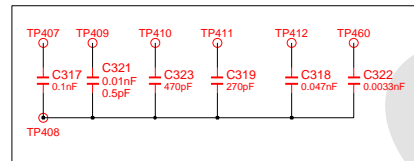
DMB-NUT



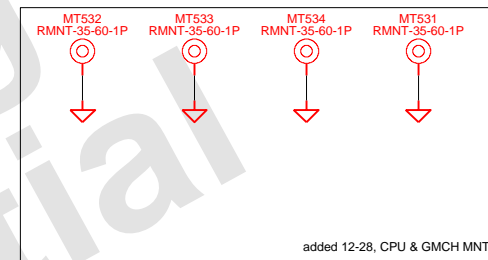
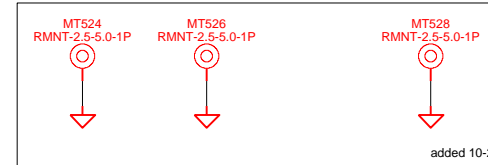
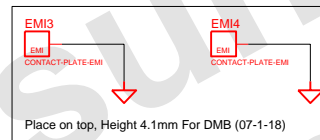
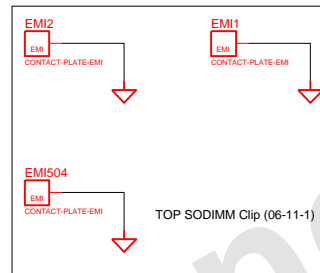
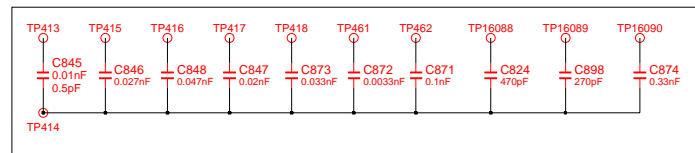
NUT for RHE, Locate on TOP of PCB



1 - 499 SIDE



500 - SIDE



REV1
1 O
2 O O3

PCB REVISION CONTROL (ICT)				
NO	CONNECTION	DATE(Y/M/D)	REVISION	STEP
1	N.C.			
2	1-2			
3	2-3			
4	3-1			
5	1-2-3			
6	N.C.			
7	1-2			
8	2-3			
9	3-1			
10	1-2-3			

DRAW	ZHOU JUN	DATE	3/9/2007	TITLE	TORINO 2	SAMSUNG ELECTRONICS
CHECK	GUO LEI	DEV. STEP	MP		MAIN	
APPROVAL	KEVIN LEE	REV	1.0		MOUNT HOLE	
MODULE CODE		LAST EDIT	March 9, 2007 12:03:21 PM	PAGE	51	OF 53

SAMSUNG PROPRIETARY THIS DOCUMENT CONTAINS CONFIDENTIAL PROPRIETARY INFORMATION THAT IS SAMSUNG ELECTRONICS CO.'S PROPERTY. DO NOT DISCLOSE TO OR DUPLICATE FOR OTHERS EXCEPT AS AUTHORIZED BY SAMSUNG.					
TP17080○ADT3_SEL	TP17032○CB3_MD_DATA4_XD	TP16778○CTRL8_25	TP16485○KBC5_KSQI(1)	TP17143○PC13_AD(24)	TP17228○G_MIC
TP17081○AUD3_GPIOD	TP17033○CB3_MD_DATA5_XD	TP16777○CTRL_12	TP16486○KBC5_KSQI(2)	TP17144○PC13_AD(25)	TP17231○G_P1.05V
TP17082○AUD3_GPIO1	TP17034○CB3_MD_DATA6_XD	TP16599○GMCH3_BMBUSY#	TP16487○KBC5_KSQI(3)	TP17145○PC13_AD(26)	TP17233○G_P3.3V
TP17083○AUD3_PCBEFP	TP17035○CB3_MD_DATA7_XD	TP16536○GMCH3_EXTSTS#	TP16488○KBC5_KSQI(4)	TP17146○PC13_AD(27)	TP17235○LCD_VDD3V
TP17084○AUD5_INTINC	TP17036○CB3_MD_VCCEN	TP16537○GMCH3_EXTTS1#	TP16489○KBC5_KSQI(5)	TP17147○PC13_AD(28)	TP17236○LDO_P5.4V
TP17085○AUD5_LINE_OUT_L	TP17037○CB3_MD_VREF_ALE	TP16538○CB3_MD_VREF_SYNCN	TP16490○KBC5_KSQI(2)	TP17148○PC13_AD(29)	TP17237○CP1.05V
TP17086○AUD5_LINE_OUT_R	TP17038○CB3_MD_XD_CE#	TP16539○HDD3_LED#	TP16491○KBC5_KSQI(3)	TP17149○PC13_AD(30)	TP17238○CP1.05V
TP17087○AUD5_MIC_VREF	TP17039○CB3_MD_XD_CLE	TP16540○HP_OUT_L	TP16492○KBC5_KSQI(4)	TP17150○PC13_AD(30)	TP17239○CP1.05V
TP17088○AUD5_SPDIF	TP17040○CB3_MD_XD_WP#	TP16541○HP_OUT_R	TP16493○KBC5_KSQI(5)	TP17151○PC13_AD(31)	TP17240○CP1.05V
TP17089○AUD5_SPDIF_OUT	TP17041○CB3_MS_BS_SD_CMD	TP16542○IDE_A0	TP16494○KBC5_KSQI(6)	TP17152○PC13_AD(31)	TP17241○CP1.25V
TP17090○AUD5_SPK_L+	TP17042○CB3_MS_NS_XD_CD#	TP16543○IDE_A1	TP16495○KBC5_KSQI(7)	TP17153○PC13_AD(31)	TP17242○CP1.25V
TP17091○AUD5_SPK_L-	TP17043○CB3_SD_CD_CD#	TP16544○IDE_A2	TP16496○KBC5_KSQI(8)	TP17154○PC13_AD(31)	TP17243○CP1.25V
TP17092○AUD5_SPK_R+	TP17044○CB3_SD_DATA0_MS_SDI0	TP16545○IDE_CS1#	TP16497○KBC5_KSQI(9)	TP17155○PC13_AD(31)	TP17244○CP1.25V
TP17093○AUD5_SPK_R-	TP17045○CB3_SD_DATA1	TP16546○IDE_CS3#	TP17353○KBC5_TCLK	TP17156○PC13_AD(7)	TP17245○CP1.2V
TP17094○BAT3_SMCLCK#	TP17046○CB3_SD_DATA2	TP16547○IDE_D(0)	TP17356○KBC5_TDATA	TP17157○PC13_AD(9)	TP17246○CP1.2V
	TP17047○CB3_SD_DATA3	TP16548○IDE_D(1)	TP16498○LAN3_ACTLED#	TP17158○PC13_CBE0#	TP17247○CP1.2V
TP17096○BAT3_TEMP#	TP16984○CB3_SD_WP_XD_R_B#	TP16549○IDE_D(10)	TP16499○LAN3_CLKREQ#	TP17159○PC13_CBE1#	TP17248○CP1.2V
TP17097○BAT3_VOLTA	TP16985○CB3_VCC3EN#	TP16550○IDE_D(11)	TP16500○LAN3_LINK1000#	TP17160○PC13_CBE2#	TP17249○CP1.2V_LAN
TP17098○CAPSLDEN	TP16986○CB3_VCC5EN#	TP16551○IDE_D(12)	TP16501○LAN3_LINK10_100#	TP17161○PC13_CBE3#	TP17250○CP1.2V_LAN
TP17099○CB3_A19	TP16987○CB3_VPPEN0	TP16552○IDE_D(13)	TP17112○LAN_VPDCLK	TP17162○PC13_CLKRUN#	TP17251○CP1.2V_LAN
TP17100○CB3_A19	TP16988○CB3_VPPEN1	TP16553○IDE_D(14)	TP17113○LAN_VPDDATA	TP17163○PC13_DEVSSEL#	TP17252○CP1.2V_LAN
TP17101○CB3_CAD(0)	TP16989○CHP3_1394_ROMW#	TP16554○IDE_D(15)	TP17114○LCD3_BKLCTCTL	TP17164○PC13_FRAME#	TP17253○CP1.5V
TP17102○CB3_CAD(1)	TP16990○CHP3_AZ_AUD_BCLK	TP16555○IDE_D(2)	TP17116○LCD3_BKLTON	TP17165○PC13_GNT0#	TP17254○CP1.5V
TP17103○CB3_CAD(10)	TP16991○CHP3_AZ_AUD_RST#	TP16556○IDE_D(3)		TP17166○PC13_INTA#	TP17255○CP1.5V
TP17104○CB3_CAD(11)	TP16992○CHP3_AZ_AUD_SDI0	TP16557○IDE_D(4)		TP17167○PC13_INTB#	TP17256○CP1.5V
TP17105○CB3_CAD(12)	TP16993○CHP3_AZ_AUD_SDO	TP16558○IDE_D(5)	TP17118○LCD3_EDID_DATA	TP17168○PC13_INTC#	TP17257○CP1.8V
TP17106○CB3_CAD(13)	TP16994○CHP3_AZ_AUD_SYNC	TP16559○IDE_D(6)		TP17169○PC13_INTD#	TP17258○CP1.8V
TP17107○CB3_CAD(14)	TP16995○CHP3_AZ_MDC_BCLK	TP16560○IDE_D(7)	TP17120○LP3C_LAD(0)	TP17170○PC13_INTE#	TP17259○CP1.8V
TP17108○CB3_CAD(15)	TP16996○CHP3_AZ_MDC_RST#	TP16561○IDE_D(8)	TP17121○LP3C_LAD(1)	TP17171○PC13_INTF#	TP17260○CP1.8V
TP17109○CB3_CAD(16)	TP16997○CHP3_AZ_MDC_SDI1	TP16562○IDE_D(9)	TP17122○LP3C_LAD(2)	TP17172○PC13_INTG#	TP17261○CP1.8V_AUX
TP17110○CB3_CAD(17)	TP16998○CHP3_AZ_MDC_SDO	TP16563○IDE_DACK#	TP17123○LP3C_LAD(3)	TP17173○PC13_INTH#	TP17262○CP1.8V_AUX
TP17111○CB3_CAD(18)	TP16999○CHP3_AZ_MDC_SYNC	TP16564○IDE_DREQ	TP17124○LP3C_LFRAME#	TP17174○PC13_IRQDY#	TP17263○CP1.8V_AUX
TP17048○CB3_CAD(19)	TP17000○CHP3_CPURST#	TP16565○IDE_IOR#	TP17125○MEM1_VREF	TP17175○PC13_PAR#	TP17264○CP1.8V_AUX
TP17049○CB3_CAD(2)	TP17001○CHP3 DPRSLPVR	TP16566○IDE_IORDY	TP17126○MIC1	TP17176○PC13_PERR#	TP17265○CP1.8V_P2.5V_LAN
TP17050○CB3_CAD(20)	TP17002○CHP3 GFXSEL	TP16567○IDE_IOW#	TP17127○MIC2	TP17177○PC13_PLOCK#	TP17266○CP1.8V_P2.5V_LAN

4		3		2		1	
---	--	---	--	---	--	---	--

COM-22C-015(1996.6.5) REV. 3

D:\users\mentor\Torino2\SR\T2_SR_030

